

THE BUZZ

for members of CKEnergy Electric Cooperative

**Youth Contest
Deadlines**

**April 12 - Energy
Camp**

April 2024

A SUPPLEMENT TO OKLAHOMA LIVING



CKEC Sponsors Caddo County Tournament

The 2024 Caddo County basketball tournament is sponsored by CKEnergy Electric Cooperative. The Caddo County Basketball tournament is an annual basketball tournament brought to you from Anadarko Warrior Fieldhouse in Anadarko. The tournament's play by play and stats provided by Don Tyson and Kem Crowell are broadcasted live on the radio at KACO 98.5 and live streamed on Prep Nation TV's YouTube channel. Mountain View-Gotebo Lady Tigers and Ft. Cobb-Broxton Mustangs took top honors in this year's tournament.

Participating teams include Binger-Oney, Boone-Apache, Carnegie, Cement, Cyril, Fort Cobb-Broxton, Gracemont, Hinton, Lookeba-Sickles, and Mountain View-Gotebo. All

Tournament team selections were presented and provided by CKEC.

CKEnergy has dedicated itself to educating the youth in our service area by offering a variety of programs designed to teach youth about electrical safety, leadership, and the cooperative world. Not only have we made an investment in our members, but we have expanded that investment to include the youth of our service area through donations, scholarships, and leadership programs. We take commitment to our community seriously; in fact, it is one of the 7 principles we are founded on. (Photos by Tricia Pierce)



2024 Caddo County Tournament
All Tournament Team



2024 Caddo County Tournament
All Tournament Team



PO Box 70 • Binger, Okla. 73009
PO Box 100 • Cordell, Okla. 73632

tele: **(405) 656-2322**

www.ckenergy.coop

OFFICE HOURS:
Monday-Friday,
8:00 am - 5:00 pm.

POWER OUTAGE
HOT LINES
800-868-8243
888-832-3362

BOARD OF TRUSTEES

Jack Sawatzky, President

Greg Little, Vice President

Dr. Fred Reuter, Secretary

John Schaufele

Mark Slemp

Robert Travis

Tony Setzer

Steve Sweeney

Walter Hrbacek

Gary Brewster

Scott Klingman

Don Payne

John Garland, Attorney

Clint Pack, CEO

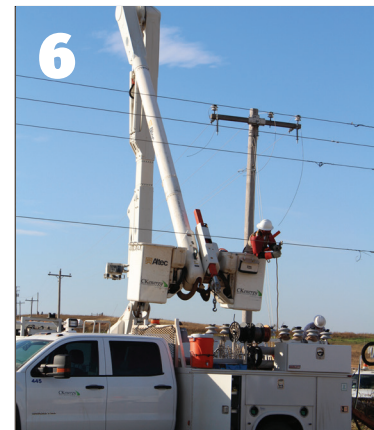
PAYMENT OPTIONS

- Pay online at www.ckenergy.coop
- Pay by phone by calling **405-656-2322**, available 24 hours a day. Visa, Mastercard, Discover, or American Express.
- Pay in person at any of our offices: Binger, Cordell, Mustang, and Anadarko.
- Pay via automatic draft of your checking or savings account. To sign up, please visit www.ckenergy.coop or call **405-656-2322**. Pay at kiosks at various locations.
- **Pay through our CKenergy App available for iPhones or Androids.**



inside this issue | April 2024

- 3** CKEC Rates
- 4** Employee Spotlight
- 5** Wildfires
- 6** What's on the Pole
- 7** Swap'N Shop



APRIL

Winning CKEC Members

Jeffrey Ray
Curry Pierce
Jimmy Piercey

If your name is listed above, please call us at **405-656-2322** to claim a \$25 credit on your electric bill.



Socialize with us!

Stay up-to-date with your co-op and your community by following us on Facebook, Twitter, Instagram, and SnapChat. Get the latest news on co-op events, services, energy saving tips, and more. During a power outage, stay connected with us for updates on the restoration process.

Questions or comments about your newsletter should be directed to Lisa Willard, Director of Communications, CKEnergy Electric Cooperative, PO Box 100, Cordell, OK 73632, email: editor@ckenergy.coop.

Energy Camp Deadline is April 12



A four day action packed adventure for eighth-graders, Energy Camp helps develop leadership skills and promotes teamwork while teaching about cooperative enterprises, the rural electrification program and electrical safety.

Each year, CKEC sponsors four students to the camp, which will be held May 28 – May 31, 2024, at Canyon Camp near Hinton, Oklahoma.

While Energy Camp offers many traditional summer camp activities like swimming, hiking, basketball, and a ropes course, teens also have the unique opportunity to climb a utility pole, ride in the basket of a bucket truck, tour one of the largest electricity generating facilities in the state.

Students currently enrolled in the eighth grade within CKEC's service territory are eligible to compete. For more information visit www.CKEnergy.coop.

CKEC Rates are Stable

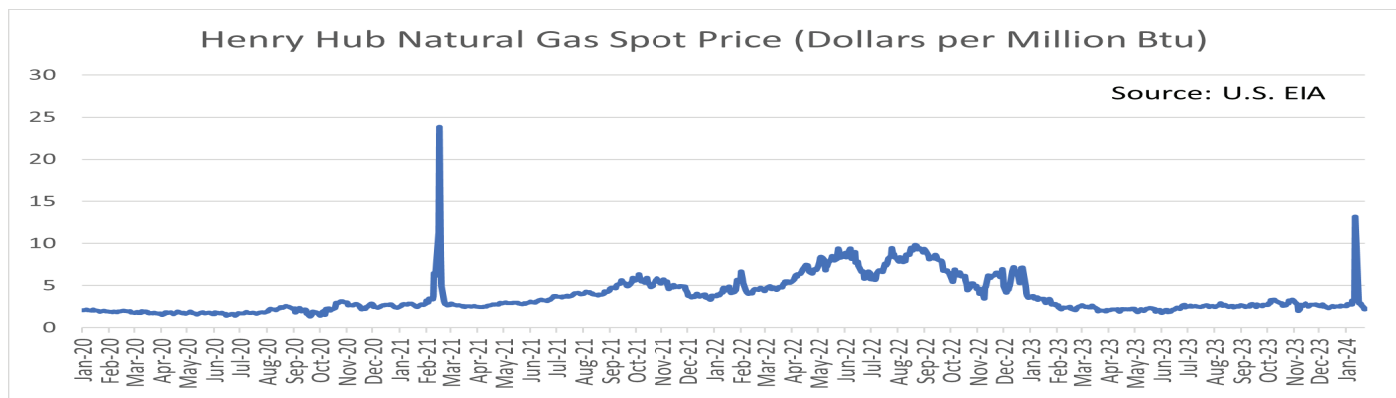
By Brian Coker, Marketing and Rates Manager

The Oklahoma Attorney General recently announced that he had negotiated a rate decrease for PSO and OGE customers. Fuel costs literally went through the roof a couple of years ago thanks to industry wide unpreparedness and major problems due to cold weather during winter storm Uri. As a result of temporary extreme gas prices, tens of millions of dollars are being passed on to PSO, OGE and most Rural Electric Cooperative customers through a dramatically increased fuel factor over the next few years. That hasn't changed, but the current cost of generation fuel has gone down allowing a reduction in the Power Cost adjustment factor charged on every kwh sold. That's the reason for the "rate reduction".

CKEnergy customers won't see a reduction because you NEVER SAW an increase from Storm Uri. The financial condition of your Cooperative enabled a decision to absorb its portion of the storm costs without the need to recover high fuel costs over time with pass-through additions to the Power Cost Adjustment.

CKEnergy adjusts for the changes in the cost of wholesale power monthly, with the Power Cost Adjustment (PCA). Record high gas prices seen during the Polar Vortex and the months following have gone back to normal levels since around the beginning of 2023. Our members see this adjustment immediately in their bills. The PCA will always fluctuate some since the price of energy is continuously moving due to the cost of fuel and grid congestion. The trend is usually seasonal when prices are higher, as in the winter and summer. Extreme events, like the recent cold spell experienced in the 2nd and 3rd weeks of January, can affect the PCA for a few months thereafter. Current market expectations show normal power prices moving forward in 2024, barring any further extreme weather or world events.

Even better news! CKEnergy rates are stable for the time being and should remain so in the near future due to good management decisions, cost conservation, efficiency programs, and the continuing benefits of the consolidation 8 years ago.





Employee Spotlight

JOHNNY JONES Safety Director

Meet Johnny Jones. Johnny is CKenergy’s Safety and Loss Director. Safety is a serious issue, especially regarding electrical safety. For CKEC, it’s the number one priority. Over time, CKEC has created a culture of safety by putting employees’ safety and that of the community above anything else.

Johnny has nearly four decades of cooperative experience. He began his career with Kiwash Electric Cooperative as an apprentice lineman in November of 1984. Johnny completed the apprentice program and became a journeyman lineman and performed linework for 25 years. Johnny served as a district lineman for many years. From maintenance to storm restoration. Johnny did it all as a lineman. In January of 2016, Johnny was promoted to Safety Director when Caddo Electric Cooperative and Kiwash Electric Cooperative consolidated and became CKenergy.

As CKEC’s Safety Director, Johnny oversees the safety of the cooperative from outside crews to the warehouse, to office personnel. Johnny ensures CKEC has established and follows safety protocols based on leading national safety practices for the utility industry. There are specific protocols that lineworkers follow when dealing with energized power lines. Lineworkers require special training for the dangerous work they do. Johnny makes sure they can climb a pole, perform overhead and underground line construction, and understand basic equipment operation. Job site observation is also key to keeping operations safe. Checking fire-aid kits and fire extinguishers, making sure all crew members are wearing appropriate PPE, and following safety procedures are essential for our crews to perform their duties safely at CKEC. Regular safety meetings take place to discuss projects from a safety perspective. Lessons learned are always shared and how to improve in the future is an ongoing conversation.

Another important role of Johnny’s position is traveling to schools and presenting electrical safety to students. Johnny participates in outdoor classrooms and enjoys teaching electrical safety to students of all ages.

Johnny and his wife Lorri reside in Ft. Cobb. Lorri is retired, but Johnny states, “She is the matriarch of the family and holds everything together.”

Johnny and Lorri have one daughter, Brittany, who resides in Highland Village, Texas with her husband Kevin. Johnny and Lorri have two granddaughters Emma, age 12 and Aby age 10. Johnny and his wife Lorri enjoy watching their granddaughters being active in tennis and gymnastics.

When they aren’t chasing granddaughters, Johnny enjoys flying as well as working on and rebuilding airplanes. Johnny has his Airframe and Powerplant licenses and his pilot’s license.

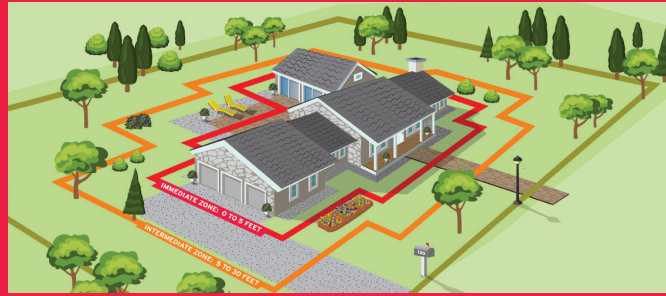
CKenergy appreciates Johnny’s dedication and service for the last 39 years!



← Kevin, Brittany, Emma Aby, Johnny and Lorri

HOW TO PREPARE YOUR HOME FOR WILDFIRES

WILDFIRE RISK REDUCTION STEPS THAT CAN MAKE YOUR HOME SAFER DURING A WILDFIRE



VEGETATION MANAGEMENT

1. HOME IGNITION ZONES

To increase your home's chance of surviving a wildfire, choose fire-resistant building materials and limit the amount of flammable vegetation in the three home ignition zones. The zones include the **Immediate Zone**: (0 to 5 feet around the house), the **Intermediate Zone** (5 to 30 feet), and the **Extended Zone** (30 to 100 feet).

2. LANDSCAPING AND MAINTENANCE

To reduce ember ignitions and fire spread, trim branches that overhang the home, porch, and deck and prune branches of large trees up to 6 to 10 feet (depending on their height) from the ground. Remove plants containing resins, oils, and waxes. Use crushed stone or gravel instead of flammable mulches in the **Immediate Zone** (0 to 5 feet around the house). Keep your landscape in good condition.

FIRE RESISTIVE CONSTRUCTION

3. ROOFING AND VENTS

Class A fire-rated roofing products, such as composite shingles, metal, concrete, and clay tiles, offer the best protection. Inspect shingles or roof tiles and replace or repair those that are loose or missing to prevent ember penetration. Box in eaves, but provide ventilation to prevent condensation and mildew. Roof and attic vents should be screened to prevent ember entry.

4. DECKS AND PORCHES

Never store flammable materials underneath decks or porches. Remove dead vegetation and debris from under decks and porches and between deck board joints.

5. SIDING AND WINDOWS

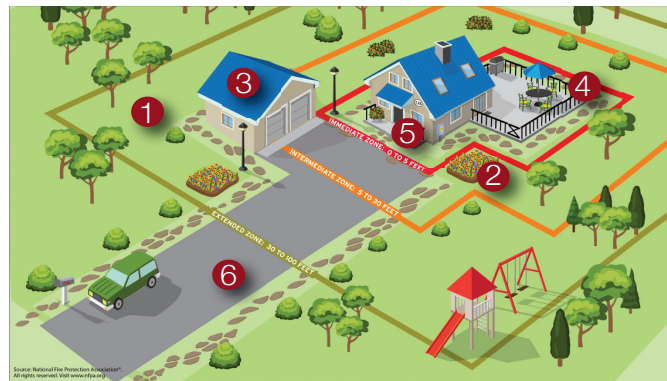
Embers can collect in small nooks and crannies and ignite combustible materials; radiant heat from flames can crack windows. Use fire-resistant siding such as brick, fiber-cement, plaster, or stucco, and use dual-pane tempered glass windows.

BE PREPARED

6. EMERGENCY RESPONDER ACCESS

Ensure your home and neighborhood have legible and clearly marked street names and numbers. Driveways should be at least 12 feet wide with a vertical clearance of 15 feet for emergency vehicle access.

- Develop, discuss, and practice an emergency action plan with everyone in your home. Include details for handling pets, large animals, and livestock.
- Know two ways out of your neighborhood and have a predesignated meeting place.
- Always evacuate if you feel it's unsafe to stay—don't wait to receive an emergency notification if you feel threatened from the fire.
- Conduct an annual insurance policy checkup to adjust for local building costs, codes, and new renovations.
- Create or update a home inventory to help settle claims faster.



**TALK TO YOUR LOCAL FORESTRY AGENCY
OR FIRE DEPARTMENT TO LEARN MORE
ABOUT THE SPECIFIC WILDFIRE RISK
WHERE YOU LIVE.**



FIREWISE USA®
RESIDENTS REDUCING WILDFIRE RISKS

VISIT [FIREWISE.ORG](https://www.firewise.org) FOR MORE DETAILS

Firewise® is a program of the National Fire Protection Association. This publication was produced in cooperation with the USDA Forest Service, US Department of the Interior, and the National Association of State Foresters. NFPA is an equal opportunity provider. Firewise® and Firewise USA® are registered trademarks of the National Fire Protection Association, Quincy, MA 02169.

Order a Reducing Wildfire Risks in the Home Ignition Zone checklist/poster at [Firewise.org](https://www.firewise.org)

WHAT'S ON THE POLE?

Utility poles have come a long way since they were first used in 1843 along the Great Western Railway for the telegraph system.

Utility poles vary based on location and the voltage of power they carry. Poles often top 40 feet in height and are set at least six feet into the ground.

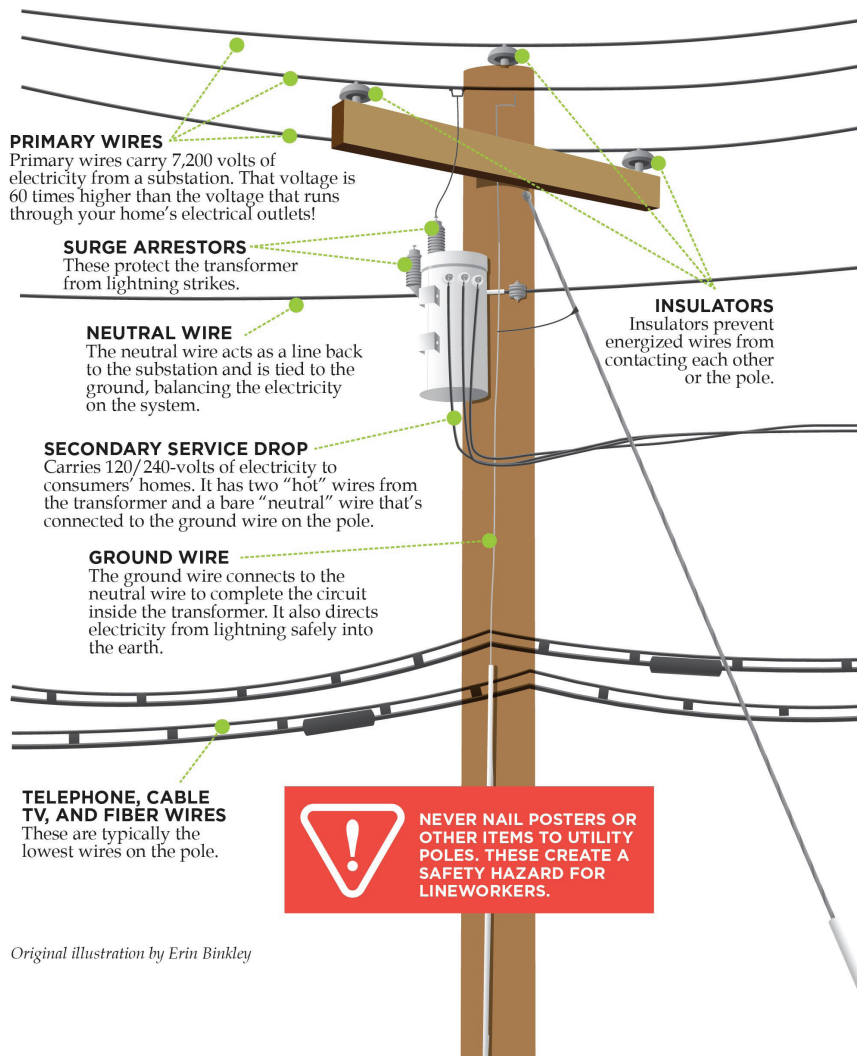
There are two types of utility poles used to carry electricity. Large poles high above the ground typically carry transmission lines, which carry higher voltage power from generation or transmission centers to another electric

power system such as a substation.

The poles typically used by CKenergy Electric Cooperative and other electric distributors and cooperatives are the poles you typically see outside of your home. Those poles carry distribution lines that take power directly to the home or business.

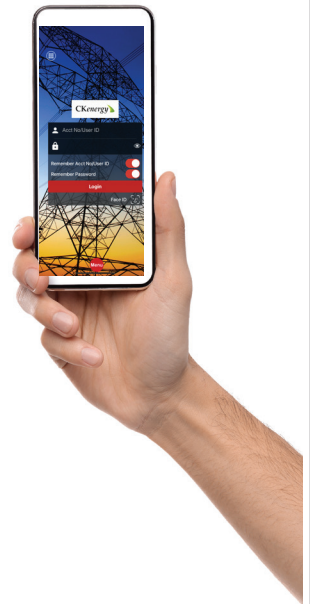
On occasion, CKEC has used electric poles that are free to members.

The graphic below illustrates basic equipment found on an electric utility pole.



Original illustration by Erin Binkley

View, Pay,
Create,
Update,
Alert,
Report,
Send &
Receive?



There's an
app for that.

Look for the CKenergy EC app on
Google Play or the App Store.



Automotive

1946 Ford CPE flathead 8-3 speed. No dents. Good glass and upholstery - runs. \$6250 580-331-7304.

93 Chevy P.U. L.W.B. single cab. Good work truck. \$2,600 cash. 405-818-9011.

1955-57 Chevy misc. stainless, steering wheel, small parts. 405-818-9011.

1932 Plymouth PB. Chevy engine and trans. New glass, wiring guages, radiator, and gas tank. Ford rear end. Mustang fron end. \$12,000. 405-262-5008

Farm/ Equipment

Norshell work trailer with chrome wheels, vice, six large tool storage boxes, three craftsman and tool boxes. \$3995/obo. 405-376-5846.

24 ft. gooseneck stock trailer. Needs floor. 580-530-0674.

MS Farmall Tractor. Propane-tricycle front, with a front end loader. \$1,500 405-542-7545

Swap 'N Shop
For Sale or Trade

Note: CKEC does not endorse or guarantee any of the products or services in these ads.

Livestock/Pets

Better bulls. Add more profit with big, stout bulls with low birth weights that will sire calves with faster growth and more muscle. Kusel Limousin and Lim-flex. Call John. 580-759-6038.

Red angus bulls, service age, gentle, several A.I. sired. Call or text 580-450-1735.

English Springer puppies. Ready for new home. Wormed and shots are current. 405-570-6367.

Business

Paving Maintenance, 405-245-6759.

Cooks Septic Service. Septic tank pumping and inspections. 580-550-0545.

C and K Trucking. 20 years exp. Hauling heavy equipment, dozers, excavators, loaders and tractors. 405-395-7758.

Liner replacement for semi end dump trailers. 405-638-1158.

Thinking of buying or selling a home or land? Call/text Doug Eckert, Wise Oak Realty: 405-400-8281. yourokcreator.com

Triple S Construction. Custom built metal awnings, carports, and more. Built on site to meet your needs. Free estimates. Find us on Facebook. 405-413-7590

Custom Laser Engraving, Apparel Printing, and Embroidery. No orders too small. Special rates for groups and Not for Profits. Promote your next event or business. Arapaho. 580-331-7986. Info@countrychickdesign.com

Mobile welding. Welding and fabrication. Call Tony at 405-834-1128.

Loud Mountain Trading Co. Cement, OK. Over 90 local artisans and craftsmen. Premium ice cream. Monday-Saturday 580-550-0545.

Swap 'N Shop Ads are continued on page 8

Swap 'N Shop is a classified advertisement service that we provide to our members at no cost.

- Members are able to submit written ads through the mail, fax, drop off, or by email.
- Ads are **NOT** taken over the phone.
- Ads need to be received by the 5th of each month to appear in the next month's issue.
- Ad space is limited to a 25 word maximum. **ONE** ad per member.
- Contact the editor at 580-832-3361 for information about availability of ad space.
- CKEC reserves the right to reject any ad deemed inappropriate.
- Ads will automatically run for 2 months, additional run time must be requested **before** the 5th of the month.

You may submit classified ads, businesses, or services to Swap 'N Shop, P.O. Box 100, Cordell, OK 73632, ads@ckenergy.coop, or fax to 580-832-5174. One ad per member unless there is additional space available.

Circle category:

Autos Farm/Equip Furn/Appl Hay/Wood Livestock/Pets Misc
Real Estate Wanted-Notices Business

Name: _____

Address: _____

Phone # _____

CKEC Acct # _____

10-6 p.m. LoudMountainTradingCo.com

www.CowgirlBeef.com. Quality beef you can afford. Ranch-raised calves finished for 120+ days and processed in OK. Buy 1 cut or the whole beef. 619-884-0970. cf2cattle@gmail.com

7 Mile Processing and Cattle Co. 181 County Road 1180, Minco. Custom and State Inspected Processing Facility and Retail Meat Market. 405-426-2569.

Door and window installation and repair. Free estimates. JD DE Shazo Construction 405-245-4042.

Buster paint striping. Roll-off dumpsters, parking lot maintenance, dumpster rental, junk and debris removal. Free estimates. 405-648-2194.

Majors Welding, LLC. Mobile welding service, fab shop and skidsteer work. Certified welding/fully insured. 405-638-2362.

Miscellaneous

C and K trucking heavy haul tractors, dozers, backhoes, trackhoes, loaders. 20 yrs. experience. 405-395-7758.

Jeans and pants hemming and minor alterations. Tuxes, accessory sales and rentals. Settle Studio. 405-247-5142.

Heavy built fire pits. Can be built with or without removable grill. Made out of propane tank ends. Prices range from \$200 to \$450. 580-819-0695.

T-shirt quilts and memory bears. Alterations. 405-933-0224.

\$100 Agreed Divorces. JNK Paralegal Service. www.jnkparalegal.com JNKparalegal@aol.com 405-376-2206.

Goober House. Fresh peanuts of many varieties, pecans, and peanut brittle. 580-515-5821. www.Gooberhouse.com

Looking to hire someone to help me sell things on market place or somewhere else. 405-256-0270.

Prairie Construction & Excavation, Pads, Ponds, Access roads, Grading & Draining, Mulching, Excavation,

Aggregate, Dirt, & Heavy Hauling. 405-802-1725. pceok.com

For removal & replacment of floor liners in semi end up trailers. 405-638-1158.

Doughty's Repair Service. New t-shirts. Quacker Factory, Denim & Co. from QVC. 2x-3x All colors, solids patterns. 918-798-3360.

Split oak firewood, delivered/stacked within 30 miles, \$125. Shopsmith Mark V. good condition with cabinet built on. \$1,800 OBO. 405-250-3700.

Steel wood burning fireplace insert with elec. blower. \$650 cash 405-818-9011. Generac portable propane. Used 65 hrs. 17.5 Kw. Excellent condition. 405-640-9068.

Home for Sale - 4 bd room. 2 bath. Completely remodeled. Sickles area. Text or call 580-383-1235

RV Hook-up - Ft. Cobb Lake (Crow Roost Area). Provide full hook-ups. Large pavilion and storm shelter. Nice and quiet get away. 405-694-0625.

Ft Cobb Lake - Crow Roost RV Sites. Nightly and weekly rates with full hookups, free laundry, sticker-free grass, quiet street. 580-772-4792.

Fort Cobb Lake - 3 lake lots for sale. Located in Crow Roost area by wildlife public hunting and lake. South end of Price Rd. on east side. 405-694-0625.

5 acre tract of land. Caddo.Grady/County line 2750. Minco. Shown by appt. only. 405-574-2980.

Real Estate

Green Chile Chicken Enchilada Casserole

Ingredients:

1 Tbsp. oil
½ cup chopped green chili peppers
½ cup chopped white onion
½ cup frozen corn
½ cup drained canned black beans
3 cloves garlic, minced
1 ¼ cups cooked shredded chicked breast
1 can green chile enchilada sauce
11 corn tortillas, cut into quaraters
2 Tbsp. sour cream
½ cup green chile salsa
1 ½ cups shredded Mexican cheese blend



Directions:

1. Preheat oven to 350 degrees
2. Heat oil in a skillet over medium heat; saute green chile peppers, onion, corn, black beans, and galic until onion is tender. Remove skillet from heat
3. Stir chicken, ½ cup enchilada sauce, and black pepper into vegetable mixture.
4. Spread ¼ cup enchilada sauce in the bottom of an 11x17 -inch casserole dish.
5. Lightly coat 1 side of 18 tortilla quarters with sour cream and arrange, sour cream-side up, in the dish. Spread ½ of the chicken mixture over tortilla layer.
6. Stir in green chile salsa, sprinkle ½ cup mexican cheese blend over chicken mixture layer in the casserole dish; top with 10 tortilla quarters. Pour ¼ cup enchilada sauce over tortilla layer; add ½ cup mexican cheese blend.
7. Lightly coat 14 tortilla quarters with sour cream and arrange, sour cream-side down, over the cheese layer. Spread 1 cup enchilada sauce over tortillas and top with reamining cheese. Bake 20-25 minutes.