



# THE BUZZ

for members of CKEnergy Electric Cooperative

**Youth Contest  
Deadlines**

**Mar. 4 - Senior  
Scholarship**

**April 12 - Energy Camp**

February 2024

A SUPPLEMENT TO OKLAHOMA LIVING

## Apply Today!



A four day action packed adventure for eighth-graders, Energy Camp helps develop leadership skills and promotes teamwork while teaching about cooperative enterprises, the rural electrification program and electrical safety.

Each year, CKEC sponsors four students to the camp, which will be held May 28 – May 31, 2024, at Canyon Camp near Hinton, Oklahoma.

While Energy Camp offers many traditional summer camp activities like swimming, hiking, basketball, and a ropes course, teens also have the unique opportunity to climb a utility pole, ride in the basket of a bucket truck, tour one of the largest electricity generating facilities in the state and watch a co-op crew at work. They'll take home a new found confidence and a host of new friends-like minded peers from all over Oklahoma.

Students currently enrolled in the eight grade within CKEC's service territory are eligible to compete for a spot at Energy Camp. For more information visit [www.CKenergy.coop](http://www.CKenergy.coop).





PO Box 70 • Binger, Okla. 73009  
PO Box 100 • Cordell, Okla. 73632

tele: **(405) 656-2322**

**www.ckenergy.coop**

OFFICE HOURS:  
Monday-Friday,  
8:00 am - 5:00 pm.

POWER OUTAGE  
HOT LINES  
**800-868-8243**  
**888-832-3362**

**BOARD OF TRUSTEES**

- Jack Sawatzky, President
- Greg Little, Vice President
- Dr. Fred Reuter, Secretary
- John Schaufele
- Mark Slemp
- Robert Travis
- Tony Setzer
- Steve Sweeney
- Walter Hrbacek
- Gary Brewster
- Scott Klingman
- Don Payne
- John Garland, Attorney
- Clint Pack, CEO

**PAYMENT OPTIONS**

- Pay online at **www.ckenergy.coop**
- Pay by phone by calling **405-656-2322**, available 24 hours a day. Visa, Mastercard, Discover, or American Express.
- Pay in person at any of our offices: Binger, Cordell, Mustang, and Anadarko.
- Pay via automatic draft of your checking or savings account. To sign up, please visit **www.ckenergy.coop** or call **405-656-2322**. Pay at kiosks at various locations.
- **Pay through our CKenergy App available for iPhones or Androids.**



# inside this issue | February 2024

- 3** Employee Milestones
- 4** Energy Trails
- 5** Energy Trails cont'd.
- 6** Winter Weather
- 7** Swap'N Shop



FEBRUARY

**Winning CKEC Members**

Oscar Caldwell  
Dean Landrith  
Allen Wedel

If your name is listed above, please call us at **405-656-2322** to claim a \$25 credit on your electric bill.



## Socialize with us!

Stay up-to-date with your co-op and your community by following us on Facebook, Twitter, Instagram, and SnapChat. Get the latest news on co-op events, services, energy saving tips, and more. During a power outage, stay connected with us for updates on the restoration process.

Questions or comments about your newsletter should be directed to Lisa Willard, Director of Communications, CKenergy Electric Cooperative, PO Box 100, Cordell, OK 73632, email: [editor@ckenergy.coop](mailto:editor@ckenergy.coop).

# CELEBRATING COOPERATIVE EMPLOYEE MILESTONES



Mason Milner  
5 years



Garrett Bradley  
10 years



Kenneth Cawthon  
10 years



Brad Claussen  
10 years



Shane Harrison  
10 years



Blake Scott  
10 years



Deborah DeVaughan  
15 years



Cade Fulmer  
15 years



Jim Gwyn  
15 years



Dana Haddon  
15 years



Wisper Howell  
15 years



Roxanna King  
15 years



Donna Mogg  
15 years



Linda Robison  
15 years



Dusty McNatt  
15 years



Michele Kauk  
25 years



Mark Lawson  
25 years



Mark Fouts  
25 years



Rick Wiest  
30 years



## CKEC's Billy Patterson returns from Guatemala

In this season of giving, Oklahoma's electric cooperatives light up lives, at home and abroad. Farmers in the mountainous region of Alta Verapaz in north-central Guatemala have their homes and farming structures fully equipped to safely receive electricity for the first time, and it was just in time for Christmas.

Volunteers from Oklahoma's electric cooperatives as well as from cooperatives in Colorado and Arkansas recently returned from a 14-day mission. The project – which is a partnership between the National Rural Electric Cooperative Association's (NRECA) philanthropic arm, NRECA International, and Heifer International – consisted of conducting internal wiring of approximately 200 homes and farming structures in 38 villages in north-central Guatemala.

The Energy Trails Team included CKenergy lineman Billy

Patterson. Billy said, "We (volunteers) began each day at 6:30 a.m. with breakfast before heading out to the villages in Guatemala. The drive times from the hotel to the villages varied from 45 minutes to two hours. The roads were paved until about the last ten miles. Those last few miles often required 4-wheel drive due to the rough terrain and mountain-like roads."

This is Billy's second Energy Trails project. He traveled to Guatemala in 2022. The first trip was amazing, but according to Billy this trip was life changing. "The interaction with the villagers inside their homes was special. The children stole a piece of my heart. They were so eager to watch, and learn, and they picked up on things so quickly," said Billy. He had a group of 10–12-year-olds that wanted to watch him. He said, "By the second house, the children knew the tools he needed and the step-by-step process. The kids insisted on carrying all of my

supplies from my tools to my ladder. Their eagerness to help was unique and special.”

Billy’s wife and son both had birthdays while he was in Guatemala. When he asked the villagers if they would sing happy birthday, they didn’t hesitate for a second. Their simplicity and friendship were a true gift.

Billy shared Galatians 6:9. “Let us not become weary in doing good, for at the proper time we will reap a harvest if we do not give up.” Billy said, “We put in long days and when I became tired, I remembered this verse. The villagers’ harvest is soon. When they experienced electricity for the first time, it was a day to remember.”

Oklahoma’s electric cooperatives, along with co-ops from Colorado and Arkansas, wired approximately 200 structures in 38 villages of north-central Guatemala. The completed project impacted nearly 1,200 farmers and their families.



Billy and a village boy assisting him



■ Pictured are Billy and his wife, Alyssa, son, Weston and daughter, Adalyn.

■ Pictured are Billy and village children



# How Extreme Winter Weather Impacts Reliability

When outdoor temperatures drop, our electricity use increases. That's because we're doing more activities inside, and our heating systems are running longer and more often to counteract colder outdoor temperatures. Factor in that we all tend to use electricity at the same times—in the morning and early evenings—and that equals a lot of strain on our electric grid.

At CKenergy, we work closely with our local generation and transmission (Western Farmers Electric Cooperative) cooperative in resource and infrastructure planning to ensure you have the power you need whenever you flip a switch, but the electric grid is much larger than your local co-op and G&T.

In winter months, when even more electricity is being used simultaneously across the country, it is possible for electricity demand to exceed supply, especially if an unexpected event like a sudden snow or ice storm or equipment malfunction occurs. If this happens, which is rare, the grid operator for our region of the country may call for rolling power outages to relieve pressure on the grid, and CKEC will inform you about the situation.

CKenergy and our G&T take proactive steps to create a resilient portion of the grid and ensure electric reliability in extreme weather, including regular system maintenance, grid modernization efforts and disaster response planning; but it takes everyone to keep the grid reliable.

To help keep the heat on for you, your family and neighbors, here are a few things you can do to relieve pressure on the grid (and save a little money along the way):

- Select the lowest comfortable thermostat setting and turn it down several degrees whenever possible. Your heating system must run longer to make up the difference between the thermostat temp and the outdoor temp.
- Seal air leaks around windows and exterior doors with caulk and weatherstripping. Air leaks and drafts force your heating system to work harder than necessary.
- Stagger your use of major appliances such as dishwashers, ovens and dryers.
- Start the dishwasher before you go to bed and use smaller countertop appliances like slow cookers and air fryers to save energy.
- Ensure that your heating system is optimized for efficiency with regular maintenance and proper insulation.
- Make sure your furnace filter isn't clogged and dirty. Replace it as needed.
- When possible, use cold water to reduce water heating costs.
- Setting your water heater thermostat to 120 degrees can help you save energy and reduce mineral buildup and corrosion in your water heater and pipes.
- Unplug devices when not in use to eliminate unnecessary energy use. Even when turned off, electronics in standby mode consume energy.
- Plug devices into a power strip so you can turn them all off at once with the push of a button.

**BEST BETS FOR Winter Savings**

Energy consumption spikes during winter months as we spend more time indoors and heating systems work overtime. You can help reduce demand and strain on the electric grid by conserving during peak energy times. Reducing energy use will also help lower your energy bills.

- UNPLUG WHEN POSSIBLE**  
Turn off unnecessary lights and electronics when you aren't using them.
- ELIMINATE DRAFTS AND AIR LEAKS**  
Seal air leaks and drafts around windows and exterior doors.
- USE APPLIANCES WHEN ENERGY DEMAND IS LOWER**  
Run large appliances like clothes washers, dryers and dishwashers early in the morning or before you go to bed.
- MAINTAIN HEATING EQUIPMENT**  
Maintain your heating system by replacing dirty, clogged filters and scheduling an annual inspection for necessary maintenance.
- LOWER THE THERMOSTAT**  
Home heating accounts for a large portion of energy consumption. Adjust your thermostat to the lowest comfortable setting (68 degrees or lower).

### Automotive

1954 Oldsmobile Rocket 88. Good body-new chrome. Runs good, but interior needs work. \$6,000. 405-376-1947.

93 Chevy P.U. L.W.B. single cab. Good work truck. \$2,600 cash. 405-818-9011.

1955-57 Chevy misc. stainless, steering wheel, small parts. 405-818-9011.

### Farm/ Equipment

16' trailer-6 ton limit. Heavy duty. Can haul equipment or vehicle. Pendulum type hitch. \$4500. 405-570-8288.

Norshell work trailer with chrome wheels, vice, six large tool storage boxes, three craftsman and tool boxes. \$3995/obo. 405-376-5846.

24 ft. gooseneck stock trailer. Needs floor. 580-530-0674.

MS Farmall Tractor. Propane-tricycle front, with a front end loader. \$1,500 405-542-7545

# Swap 'N Shop

## For Sale or Trade

*Note: CKEC does not endorse or guarantee any of the products or services in these ads.*

### Livestock/Pets

Better bulls. Add more profit with big, stout bulls with low birth weights that will sire calves with faster growth and more muscle. Kusel Limousin and Lim-flex. Call John. 580-759-6038.

Red angus bulls, service age, gentle, several A.I. sired. Call or text 580-450-1735.

German wire haired pointers. Female 10 yrs. old. Male 6 ears old. Female hunted all her life. Male hasn't hunted much. 405-687-0125.

### Business

Paving Maintenance, 405-245-6759.

Cooks Septic Service. Septic tank pumping and inspections. 580-550-0545.

C and K Trucking. 20 years exp. Hauling heavy equipment, dozers, excavators, loaders and tractors. 405-395-7758.

Liner replacement for semi end dump trailers. 405-638-1158.

Thinking of buying or selling a home or land? Call/text Doug Eckert, Wise Oak Realty: 405-400-8281. yourokcreator.com

Triple S Construction. Custom built metal awnings, carports, and more. Built on site to meet your needs. Free estimates. Find us on Facebook. 405-413-7590

Custom Laser Engraving, Apparel Printing, and Embroidery. No orders too small. Special rates for groups and Not for Profits. Promote your next event or business. Arapaho. 580-331-7986. Info@countrychickdesign.com

Mobile welding. Welding and fabrication. Call Tony at 405-834-1128.

Loud Mountain Trading Co. Cement, OK. Over 90 local artisans and craftsmen.

**Swap 'N Shop Ads are continued on page 8**

Swap 'N Shop is a classified advertisement service that we provide to our members at no cost.

- Members are able to submit written ads through the mail, fax, drop off, or by email.
- Ads are **NOT** taken over the phone.
- Ads need to be received by the 5th of each month to appear in the next month's issue.
- Ad space is limited to a 25 word maximum. **ONE** ad per member.
- Contact the editor at 580-832-3361 for information about availability of ad space.
- CKEC reserves the right to reject any ad deemed inappropriate.
- Ads will automatically run for 2 months, additional run time must be requested **before** the 5th of the month.

**You may submit classified ads, businesses, or services to Swap 'N Shop, P.O. Box 100, Cordell, OK 73632, ads@ckenergy.coop, or fax to 580-832-5174. One ad per member unless there is additional space available.**

#### Circle category:

Autos   Farm/Equip   Furn/Appl   Hay/Wood   Livestock/Pets   Misc  
Real Estate   Wanted-Notices   Business

Name: \_\_\_\_\_

Address: \_\_\_\_\_

Phone # \_\_\_\_\_

CKEC Acct # \_\_\_\_\_

---



---



---



---



---

Premium ice cream. Monday-Saturday 10-6 p.m. LoudMountainTradingCo.com

www.CowgirlBeef.com. Quality beef you can afford. Ranch-raised calves finished for 120+ days and processed in OK. Buy 1 cut or the whole beef. 619-884-0970. cf2cattle@gmail.com

7 Mile Processing and Cattle Co. 181 County Road 1180, Minco. Custom and State Inspected Processing Facility and Retail Meat Market. 405-426-2569.

Door and window installation and repair. Free estimates. JD DE Shazo Construction 405-245-4042.

Buster paint striping. Roll-off dumpsters, parking lot maintenance, dumpster rental, junk and debris removal. Free estimates. 405-648-2194.

Majors Welding, LLC. Mobile welding service, fab shop and skidsteer work. Certified welding/fully insured. 405-638-2362.

### Miscellaneous

C and K trucking heavy haul tractors., dozers, backhoes, trackhoes, loaders. 20 yrs. experience. 405-395-7758.

Jeans and pants hemming and minor alterations. Tuxes, accessory sales and rentals. Settle Studio. 405-247-5142.

Heavy built fire pits. Can be built with or without removable grill. Made out of propane tank ends. Prices range from \$200 to \$450. 580-819-0695.

T-shirt quilts and memory bears. Alterations. 405-933-0224.

\$100 Agreed Divorces. JNK Paralegal Service. www.jnkparalegal.com JNKparalegal@aol.com 405-376-2206.

Goober House. Fresh peanuts of many varieties, pecans, and peanut brittle. 580-515-5821. www.Gooberhouse.com

Offering a new service. When you can not, I can assist by checking on your loved one in the hospital, nursing home or their home. Janice Smith, Companion Care. 405-542-7498.

Looking to hire someone to help me sell things on market place or somewhere else. 405-256-0270.

Prairie Construction & Excavation, Pads, Ponds, Access roads, Grading & Draining, Mulching, Excavation, Aggregate, Dirt, & Heavy Hauling. 405-802-1725. pceok.com

For removal & replacment of floor liners in semi end up trailers, call/text 405-638-1158.

Doughty's Repair Service. New t-shirts. Quacker Factory, Denim & Co. from QVC. 2x-3x All colors, solids patterns. 918-798-3360.

Split oak firewood, delivered/stacked within 30 miles, \$125. Shopsmith Mark V. good condition with cabinet built on. \$1,800 OBO. 405-250-3700.

### Real Estate

RV Hook-up - Ft. Cobb Lake (Crow Roost Area). Provide full hook-ups. Large pavilion and storm shelter. Nice and quiet get away. 405-694-0625.

Ft Cobb Lake - Crow Roost RV Sites. Nightly and weekly rates with full hookups, free laundry, sticker-free grass, quiet street. 580-772-4792.

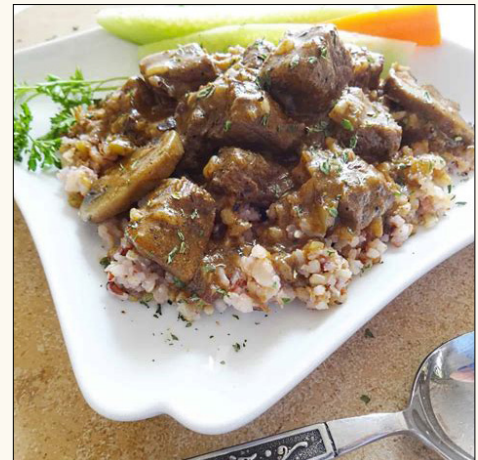
### Wanted-Notices

Wanted AFX, Aurora, slot cars, redline hotwheels, comic books, model car kits. 405-361-2227.

## Beef Tips

### Ingredients:

- 2 lbs. beef stew meat
- 2 cans cream of mushroom soup
- 2 packets of brown gravy mix
- 1 beef bullion cube
- 1 cup water
- 1 small onion chopped



### Directions:

1. Mix packets of brown gravy as directed on package.
2. Combine all ingredients plus the gravy mix and place in a crockpot.
3. Cook on low for 6-8 hours.
4. Serve wth rice or egg noodles.