



THE BUZZ

for members of CKenergy Electric Cooperative

CKenergy offices will be closed on Monday, September 4, in observation of Labor Day.

SEPTEMBER 2017

A SUPPLEMENT TO OKLAHOMA

Annual Meeting 2017



On Friday, August 11, 2017, members travelled from all over our service territory to attend this year's 2nd Annual Meeting.

Annual meetings are a way for cooperatives to connect with their memberships on a more personal level. Cooperative staff are able to discuss the happenings within the co-op, meet new members, or even re-connect with those who have been members for decades.

This year's Annual Meeting was a big hit with everyone in attendance! We had 390 members register for this year's event.

By attending, CKEC members were given a new tote bag, an apron, ball cap, and a \$20 bill credit. Those who registered were entered to win a brand new lawn tractor, and several cash prizes (\$50- \$150). For entertainment, members and guests were able to enjoy the comedic stylings of

ventriloquist Gary Owen and the musical talent of Graystone Bluegrass Revival. Members and guests were also treated to a delicious meal of pulled pork sandwiches with chips, baked beans, & a dessert, catered by Adventures in Catering out of Mustang, Oklahoma.

The little ones in attendance were able to enjoy their very own registration gifts and prize drawings, two different bounce house obstacle courses, a train ride, and SnoCones!

It was a great event full of food, music, children's entertainment, prize giveaways and so much more.

Those of us here at CKEC would like to extend many thanks to all of our members who turned out for our 2nd Annual Meeting as CKenergy. We hope you all enjoyed it as much as we did. See you all next year!

2017 Winners

Grand Prize- Lawn Tractor
Larry Hughes

District Winners- \$150
Gerald Pennington
Donald Troyer
Bobby Kee
Justin Brown
Joseph Norwick
Green Acre F.D
Sedan F.D.
Larry Chapman
Carol Campbell
Doug Haffner
Bill Kosanke
Bryan Flaming
Don Orrell
Steve Coon

\$50 Winners
Church of the Firstborn
Virgil & Brenda Payne
Jerry Miller
Luther Newman
Eldon Holman
Sharon Baptist Church
Randall Lunow
Dirk Webb
Stan Funkhouser
Wesley Burchfield

\$100 Winners
Clarence Turney
Robert Yarber
Wanda Wall
Nick Byrd
Max Boothe
James Fletcher
Charles Nimmo
Stacy Reimer
Brad Schaufele
Jackie Miller
Ron Leedy



PO Box 70 • Binger, Okla. 73009
PO Box 100 • Cordell, Okla. 73632

tele: **(405) 656-2322**
(580) 832-3361

www.ckenergy.coop

OFFICE HOURS:
Monday-Friday,
8:00 am - 5:00 pm.

POWER OUTAGE
HOT LINES
800-868-8243
888-832-3362

BOARD OF TRUSTEES

- Glenn Propps, President
- Jack Sawatzky, Vice President
- Dr. Fred Reuter, Secretary
- John Schaufele
- Mark Slep
- Robert Travis
- Herman Myers
- Walter Hrabcek
- Greg Little
- Gary Brewster
- Don Payne
- Jack McLemore
- John Garland, Attorney
- Clint Pack, CEO

PAYMENT OPTIONS

- Pay online at www.ckenergy.coop.
- Pay by phone by calling **405-656-2322**, available 24 hours a day. Visa, Mastercard, Discover, or American Express.
- Pay in person at any of our offices: Binger, Cordell, Mustang, and Anadarko.
- Pay via automatic draft of your checking or savings account. To sign up, please visit www.ckenergy.coop or call **405-656-2322** or **580-832-3361**.
- **Pay through our CKenergy App available for iPhones or Androids.**



inside this issue | SEPTEMBER 2017

- 3** Annual Meeting Photos
- 4** Youth Tour 2017
- 5** Surplus Auction
- 6** Co-op Lines
- 7** Swap'N Shop



JULY

Winning CKEC Members

Brad Hurst
Flora King
Bennie Waters

If your name is listed above, please call us at **405-656-2322** to claim a \$25 credit on your electric bill.



Socialize with us!

Stay up-to-date with your co-op and your community by following us on Facebook, Twitter, and Instagram. Get the latest news on co-op events, services, energy saving tips, and more. During a power outage, stay connected with us for updates on the restoration process.

Questions or comments about your newsletter should be directed to Devin Whittington, Communications Specialist, CKenergy, PO Box 70, Binger, OK 73009, email: editor@ckenergy.coop.



Gary Owen



Graystone Bluegrass Revival



CEO Clint Pack and 2017's grand prize winners



2017 Rural Electric Cooperative Youth Tour



Ashlynn Karlin- Weatherford High School, Madison Scott- Lookeba-Sickles High School, Tyler Wedel- Cordell High School, & Kade Squires- Lookeba-Sickles High School recently returned from the Annual Rural Electric Cooperative Youth Tour in Washington, D.C. These students won the week-long trip through the 2017 Youth Tour contest, sponsored by CKenergy.

On Friday, June 9th, a banquet was held for the 70 winners, representing 25 of the state's rural electric systems. The tour departed for the nation's Capitol early the next morning.

The students spent the week touring the museums and visiting all of the historical monuments. In addition to

visiting the museums and monuments, the Oklahoma winners toured Mount Vernon, The U.S. Capitol, the Pentagon, Ford's Theatre, enjoyed a riverboat cruise on the Potomac River, and they also spent time with winners from other states at NRECA's Youth Day. Students also met with Congressman Markwayne Mullin and his wife while he gave a private tour of the Nation's Capitol Building. Senator Inhofe and Congressman Frank Lucas joined the students in the Longworth House office building and discussed current issues at the federal and state level.

Included with their trip to Washington, D.C., the students sponsored by CKEC will receive a \$500 scholarship that is valid at any Oklahoma college, university, or technical college.



CKenergy Electric Foundation



Giving to those in need is a great way to tap into the Oklahoma spirit and thousands of Oklahoma's Electric Co-op members do just that by donating funds year-round through Operation RoundUp.

As a member of CKenergy Electric Cooperative, you have the opportunity to participate in the Operation Roundup program. The program works by allowing co-op members to round up their monthly electric bills to the nearest dollar amount. The spare change is transferred to CKenergy's Operation RoundUp fund and dispersed to local charitable causes.

For example, let's say you have a monthly electric bill of \$84.62. The bill is rounded up to a flat \$85, with the additional 38 cents going into the Operation RoundUp

Fund. On average, a co-op member donates roughly \$6 each year. Seems like a small amount, right? It is, but when multiplied by thousands of other CKenergy members, Operation RoundUp raises thousands of dollars for local causes.

Operation RoundUp funds are used to address important local needs. Local charities, youth groups, schools, fire departments, senior citizen's centers and food banks are just a few of the beneficiaries of RoundUp funds. Funds are also used to help needy individuals and families pay for medical equipment and other needs.

CKenergy Electric Cooperative is passionate about the communities we serve. Together, electric co-ops with

Operation RoundUp programs in place have raised more than \$100 million since 1989.

Grants are decided by a twelve-member board of cooperative members who volunteer their time to oversee the program. CKenergy Electric co-coordinators are Boyd Lee and Devin Whittington. Requests for assistance are reviewed and evaluated quarterly throughout the year.

We hope you will continue to participate in CKenergy's Operation RoundUp. Your small change will change lives, and together we will make a big difference right here in Oklahoma.

3rd Quarter grant applications are due by October 4, 2017.

2017 CKenergy Surplus Auction

CKenergy is taking sealed bids on vehicles and other surplus items.

Bids are due by 12:00 p.m. on Tuesday, September 26, 2017. Bid sheets are available at all CKenergy offices. Members seeking more information on the auction, or for a full list of auction items, can contact Jerid McAdoo at 405-656-2322.



Co-op lines: single or double?



Living on CKenergy's lines is a literal expression, meaning you have a system of poles and wires connecting your home or business to the co-op so you can get power when and where you need it. While these systems of poles and wires all look quite similar, there are distinct differences. Let's take a look at those differences and why they are important. Caution: Utility terms ahead!

Everything starts at the substation when it comes to co-op distribution systems. Transmission lines feed high voltage into the substation, where it is reduced to a more manageable and safer level. On the other side of these transformers, distribution feeder lines carry the power out and into the service area, where they "feed" power to a sizeable block of co-op members. This is an efficient way to move a large amount of power closer to its point of use. These are also what are termed radial feeds, meaning only one end is connected to a power source.

At certain points along the feeders, lateral lines branch out to connect member loads, which are the amounts of power a home or business needs. Systems are designed to supply the amount of load to which they are connected. If you look at a simple map

of CKEC's distribution system, it resembles the veins and arteries of the human body. Only in this case, it carries life-enhancing electricity instead of life-sustaining blood. These lateral lines are also radial in many cases. Eventually, the last member is reached and the system goes no further.

Lateral lines are the "single" lines referenced in the title of this article. When co-op distribution systems were first built, the most cost effective solution in a lot of cases was the lateral approach. This was especially true for far-flung, end-of-line members. There is one drawback to a lateral or single line approach, however. When there is a fault (something causing the flow of electricity to stop, like a tree on the lines or a pole being broken by a car) in the system, every member beyond that point loses power until the problem is located and corrected.

Enter the double line approach. A normal evolution in distribution system growth is to replace radial lines with loop connections. The loop is connected to a power source at two ends rather than one. This power source can be another substation or another feeder from the same substation. With this approach, when power is interrupted, we have the

Energy Efficiency Tip of the Month



According to the Consumer Electronics Association, the average household owns 24 consumer electronics products, which are responsible for 12 percent of household electricity use. ENERGY STAR-certified audio/video equipment is up to 50 percent more efficient than conventional models.

Source: TogetherWeSave.com

opportunity to rapidly restore power to a large portion of the affected members.

Here is how the loop works. Let's say a tree branch breaks and falls onto the wires. Equipment on the lines senses the fault and operates protective devices immediately in front of the fault, just like circuit breakers do in your own home. No power flows beyond the protective device, and all members beyond this point lose power.

Back at the co-op, the system has alerted operators to the problem or members have started calling about the power outage. Crews are sent to the area to find and fix the problem. If the line is a single, radial one, power for everyone is out until the problem is corrected. But, if a loop is in place, the operators at the co-op or crews in the field can flip switches and reroute the power around the fault. This means faster power restoration for many members. The purpose of the loop or double line approach is exactly this, restoring power to members faster than where a single line is in place. CKEC maintains 7,721.29 miles of line, which bring power to thousands of members. In the event of a power outage, please give us a call at 1-800-868-8243.

Automotive

I buy junk cars & farm machinery, call 405-641-3344 for more information.

Hilltop Small Engine Repair, 3 mi north of Gracemont, 1/2 mi west on CR 1230. 405-638-0325.

Carburetor Rebuilding- 30 yrs experience on all carburetors. 1000's in stock with 1 year warranty. I'll save you time & money! 541-515-2933.

Apache Starter & Alternator- 2.5 miles N. of sale barn. Apache, OK 580-588-9284.

55 Chevy Bel Air. 2 dr, hard top, 350/350. Lots of new parts. Runs & drives great. Great all power & ac car. New tires & cragers. \$28,500. 405-818-9011.

Farm/ Equipment

Marrow's Tractor Tire Repair, Sales, & Service 405-668-0248

4020 John Deere- Big Rubber 23-1-30. Dual loader & bucket 8'. Good paint, new seat, PTO, no dents. \$16,500. 580-331-7304.

Great plains solid stand drill. 24' Krause Model 2423 disc javorsky field cultivator. 30' International 7/18 on land mold board. '62 Ford F-600 steel bed & lift. 580-347-2785.

Swap 'N Shop

For Sale or Trade

Note: CKEC does not endorse or guarantee any of the products or services in these ads.

'74 Quad Range 4430 John Deere. 2266 hours after over haul. \$16,700. 580-515-5993.

John Deere Lawn Tractor. \$800. Troy Built Rear Tine Tiller \$350. Troy Built Generator. \$1,200. OBO. 405-643-9211.

'62 D15 Allis Chalmers tractor. Front end loader, brush hog, plow, disk. \$5,500. 580-515-9480.

7ft. Brush Hog MX7. Almost new. Used very little. 2 tractors- 1- 1947 & 1- 1948, need TLC. 405-352-0827 or 405-613-5731.

Livestock/Pets

Free to good home- 6yr old, spayed female blackmouth mountain cur dog. Sweet disposition, kid friendly, obedient, housebroke, up to date on shots. Needs fenced in yard. 580-309-1489.

2 Free Donkeys. 3 year old & 4 year old. 405-638-0208.

2 Club Lambs- Hampshire. March & April wethers. Broke to lead. 580-515-5993.

Registered Belted Galloway Cattle. Efficient on grass, gentle, great genetics. 580-919-3271.

Business

BackWoods Welding & Construction- Farm & ranch welding, pipe fencing, steel buildings, metal roofs, pole barns, state certified & insured. References available. 405-320-8379.

Hauling/moving of most anything. Will pick up old cars/and junk metal. 405-952-4993.

Welding & Fabrication work. Call Tony, 405-834-1128.

Hooked on Antiques. 209 W Main, Binger. Open Wed. 9:30 a.m.- 5 p.m. Thurs. 9 a.m.- 4:30 p.m. Call 405-202-6563 for more info.

King Cement Services, Eakly, OK. 405-545-2141 or 580-450-7804.

Hay

Last year's grass hay. Round bales. \$25 each. 580-588-2627.

Miscellaneous

16' 6 passenger 4 cylinder chevy inboard boat with OMC outdrive. Good fishing & skiing boat. \$2,000. 405-623-5511 or 405-247-3151.

Swap 'N Shop Ads are continued on page 8

You may submit classified ads, businesses, or services to Swap 'N Shop, P.O. Box 70, Binger, OK 73009, ads@ckenergy.coop, or fax to 405-656-2327. One ad per member unless there is additional space available.

Circle category:

Autos Farm/Equip Furn/Appl Hay/Wood Livestock/Pets Misc
Real Estate Wanted-Notices Business

Name: _____

Address: _____

Phone # _____

CKEC Acct # _____

Swap 'N Shop is a classified advertisement service that we provide to our members at no cost.

- Members are able to submit written ads through the mail, fax, drop off, or by email.
- Ads are **NOT** taken over the phone.
- Ads need to be received by the 10th of each month to appear in the next month's issue.
- Ad space is limited to a 25 word maximum.
- Contact the editor at 405-656-2322 for information about availability of ad space.
- CKEC reserves the right to reject any ad deemed inappropriate.
- Ads will automatically run for 2 months, additional run time must be requested **before** the 10th of the month.

Miscellaneous Cont.

Generator, 7500 Watt. Electric start, like new. 3-4 hours of use. \$650. 405-623-8934.

Used: 170ft. 48" galvanized link fence. Rolled up and ready to load. 8 rails, 10 posts. \$200. 580-302-4175.

Furniture/Appliance

Sewing machine, "Signature" in cabinet with accessories. Good condition. Cash only. 580-347-2437.

Real Estate

Fort Cobb Lake Lots- Crow's Roost area. 3 lots recently cleared & levelled off. 192' wide x 120' deep, 2 water wells, & septic. 405-694-0625.

12x60 3bd, 2ba, partially furnished, mobile home. \$30,000. Crow's Roost Edition. 405-601-0382.

16X80 3 bed 2 bath, Mobile Home on 64X120 lot. 2 yr old central H&A, new carpet, new hot water tank, new pressure well. Covered porch. 14X30 pole barn, \$35,500. 405-601-0382. Call for info.

20 Acre Horse Property. 4250sqft home, barns, arena, pipe & cable fence, bermuda, 14X80 mobile home, 20 min from OKC. El Reno area. \$695,000. 405-410-5222.

Nice Brick Home in Eakly. 2 bd, 2 ba. Nice storage, basement, 2 car garage, front porch, back porch w/ patio. Building in back yard. \$85,000/negotiable. 405-687-0375.

1 Acre Commercial Zoned. 4 3/4 E of Tuttle on HWY 37. 405-794-4612.

Hunting Lodge- sleeps 6. Rent by week or month with all amenities, all appliances, & new beds. \$500/week or \$1,800/month. Close to Fort Cobb Lake.- Call Wanda. 580-302-3051.

Ft. Cobb Lake (Flying Inn #2) 3 bd, 2 ba, 1456sqft. 30x50 shop. Less than 500ft from water (boat dock), open floor plan, formal din, kit din, lg covered ft & bk porches. Excellent condition. \$134k 580-772-4663.

60x60 shop w/ living app. 3600 sq. ft. 3000 working. Complete shop with anything you could need. Has heat with 2 lifts. 580-331-7180.

4.5 acres W edge of Cordell. 4 bd, 3 1/2 ba, brick home. 40x60 barn, basement, new kitchen, carpet, tile, windows, roof, & fence. Must see. 940-395-1370.

5 acre tract of land. Timber, wildlife. Financing available. Minco school district. Electric & wa-

ter available. new home site, no trailer homes. 405-352-5190.

1102 SW 8th, Anadarko. 3 bd, 1 updated ba, cellar in garage, fenced in yard. Great neighborhood. ABC Realty 580-515-1752.

528 S. Spencer, Hinton. Completely remodeled. Must see. 3 bd, 2 ba, utility room. Detached garage. 1,450 sq. ft. MOL. 405-306-1538.

2,128 sq. ft. home. 3 bd, 2 1/2 ba. Lg. living room. 5 walk-in closets. Metal roof, all electric. Well kept-40x50 steel bldg. on 5 acres. Grace-mont. Serious lookers only. 580-515-4126.

3 bd, 2 ba brick home. XL lot west edge of Cordell. New Four Seasons sunroom/patio. basement, storage shed, fence, updated throughout. \$199,900. 940-395-1370.

Gracemont: Quiet, small, rural acreage w/ 3b, 1 1/2 ba brick home. Attached garage, storm shelter, shop building, 2 car carport, old barn, water well, close to town, paved road. Reduced to \$79,900. 405-402-0895.

Auto- transmission shop. All equipment w/ it. 60x60x14 building. 6 lots on corner. Built in 05. 580-331-7180.

1 acre commercial zoned. Between Tuttle & Tricity on highway 37. 4 3/4 mi east of Tuttle. 405-794-4612.

3 bd, 1 ba. Carport, storage building, fenced in

yard, new kitchen, remodeled bathroom with wood, tile, & carpet floors and new windows. \$83,000, just have to see. 405-952-4171.

Two lots. Well, electricity, 2 metal buildings, 21 ft. Tahoe travel trailer. Used very little but needs repairs. Make offer. Swan Lake area. 405-681-6991.

Cedar Lake Cabin (lot 821). Dock space, 2 bed, 1 bath. 1048 sq. ft. \$65,500. 405-295-2401.

Ft. Cobb lake north of golf course, south of 77 ranch. Three/two home. Two lots, garage, well water, metal roof. Nice porch with shade. \$95,000. 405-664-0983.

Two acres south of Carnegie. 3 bed, 2 bath trailer. Living room, den, 2 car garage, shop, storage shed, garden shop. 2 cellars. \$75,000. 580-654-2202.

Events

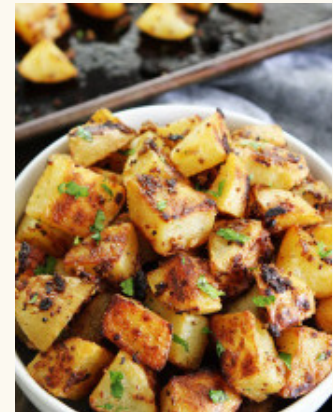
SAVE THE DATE: The 2017 Women in Ag and Small Business Conference will be November 9, 2017, at the Caddo-Kiowa Vo-Tech Center. Our keynote speaker is Farm Babe. She is a must see! Go and check her out at <http://www.thefarmlife.com>

If you would like more information please contact the Caddo County FSA Office @405-247-3303 and ask for Ada Anderson or Kelly Kay Hunt.

Mustard Crusted Potatoes

Ingredients:

1/3 cup olive oil
1/3 cup Dijon mustard
1/3 cup whole-grain mustard
Grated zest and juice of 2 lemons
4 garlic cloves, minced
6 Yukon Gold potatoes, peeled and quartered (about 6 cups)
Kosher salt
1/2 fresh lemon, cut into wedges
Minced fresh flat-leaf parsley, for



Directions:

Preheat oven to 400 degrees F.
In a large bowl, whisk together the olive oil, mustards, lemon zest, lemon juice, and garlic. Add the potatoes and toss to coat with the mixture.
Spread the potatoes on a rimmed baking sheet and sprinkle generously with salt.
Bake for 30 minutes. Toss the potatoes, return to the oven, and bake for 15 minutes, or until the potatoes are a deep golden brown and fork-tender.
Transfer the potatoes to a serving platter, squeeze the fresh lemon juice over them, and sprinkle with parsley. Serve hot.