

## Understanding Energy Demand and Purchasing



Our G&T:

### Western Farmer's Electric Cooperative

**# of Member Systems:** 20  
**# Transmission Miles:** 3,700  
**# Substations:** 279  
**Wind Generation:** 575 MW  
**Area Served:** 78 counties in parts of Kansas, New Mexico, Oklahoma, & Texas  
**Primary Fuels:** Coal, Natural Gas, Wind, Hydro

**Y**ou may not think you need to have an understanding of energy demand and purchasing, but do you ever look at your energy bill and wonder what it all means? If your answer to that question is “yes,” then you might be interested to learn how demand impacts your utility bill.

To start, it is important to understand how electricity is made and how it is delivered to your home.

Before CKenergy can send electricity to your home, that electricity needs to be generated by a Generation and Transmission cooperative (G&T). Our G&T is Western Farmer's Electric Cooperative (WFEC). Once the electricity has been generated, it travels over high-voltage transmission lines to substations, where the voltage is reduced to a safer level. The electricity then travels over distribution power lines and finds its way into your home. So, while you pay your bill to us – your electric distribution

cooperative – we don't actually generate the electricity you use. That is the job of WFEC.

We do help to determine how much electricity our members need to power their homes and businesses, and you play a big part in determining how much electricity WFEC needs to create in order to keep the lights on in our community. That is where these terms “consumption” and “demand” come in.

Consumption is measured in kilowatt hours (kWh). Demand is measured in kilowatts (kW). A lightbulb “consumes” a certain number of watts, let's say 100 watts per hour. If that lightbulb stays on for 10 hours, it “demands” a certain number of kilowatts (in this case, 1 kW) from the generation station producing electricity. Now, if you turn on 10, 100-watt lightbulbs in your home for one hour, you are still consuming the same number of kW. However, you are placing a demand on the utility to have those kW available

to you over the course of one hour, instead of ten. This requires the generation and transmission plant to produce more power in less time in order to meet your demand.

CKenergy purchases kilowatt hours from WFEC based on the average demand of our members. Peak demand refers to the time of day when the demand for electricity is highest. This is typically during the evening when families return home from work or school, cook dinner and use appliances the most. Using electricity during this peak demand period often costs more to both CKenergy and to our members.

Demand is the reason your electricity bill fluctuates season to season and even year to year. Generating and distributing power can be a tricky and complicated business, but rest assured CKenergy will always meet the necessary demand to provide safe, reliable and affordable electricity to your family.



PO Box 70 • Binger, Okla. 73009  
PO Box 100 • Cordell, Okla. 73632

tele: **(405) 656-2322**  
**(580) 832-3361**

[www.ckenergy.coop](http://www.ckenergy.coop)

OFFICE HOURS:  
Monday-Friday,  
8:00 am - 5:00 pm.

POWER OUTAGE  
HOT LINES  
**800-868-8243**  
**888-832-3362**

#### BOARD OF TRUSTEES

- Glenn Propps, President
- Jack Sawatzky, Vice President
- Dr. Fred Reuter, Secretary
  - John Schaufele
  - Mark Slep
  - Robert Travis
  - Herman Myers
  - Walter Hrabcek
  - Greg Little
  - Gary Brewster
  - Don Payne
  - Jack McLemore
- John Garland, Attorney
- Clint Pack, CEO

#### PAYMENT OPTIONS

- Pay online at [www.ckenergy.coop](http://www.ckenergy.coop).
- Pay by phone by calling **405-656-2322**, available 24 hours a day. Visa, Mastercard, Discover, or American Express.
- Pay in person at any of our offices: Binger, Cordell, Mustang, and Anadarko.
- Pay via automatic draft of your checking or savings account. To sign up, please visit [www.ckenergy.coop](http://www.ckenergy.coop) or call **405-656-2322** or **580-832-3361**.
- **Pay through our CKenergy App available for iPhones or Androids.**



## inside this issue | NOVEMBER 2017

- 3** Youth Tour
- 4** Operation Round Up
- 5** Offset Seasonal Usage
- 6** Holiday Cooking Safety
- 7** Swap'N Shop



#### NOVEMBER

#### Winning CKEC Members

David Hutchinson  
Sue Engle  
Kendra Porter

If your name is listed above, please call us at **405-656-2322** to claim a \$25 credit on your electric bill.



#### Socialize with us!

Stay up-to-date with your co-op and your community by following us on Facebook, Twitter, Instagram, and SnapChat. Get the latest news on co-op events, services, energy saving tips, and more. During a power outage, stay connected with us for updates on the restoration process.

Questions or comments about your newsletter should be directed to Devin Whittington, Communications Specialist, CKenergy, PO Box 70, Binger, OK 73009, email: [editor@ckenergy.coop](mailto:editor@ckenergy.coop).



# The Road to Self Discovery



2017 Youth Tour participants visit with Honor Flight veterans at the Airforce Memorial.

For more information about the Youth Tour program, contact Lisa Willard or Devin Whittington at 405-656-2322.

their elected officials work for their hometown community. Students often have the opportunity to discuss issues with legislators and our chaperons are always impressed with the interactions and questions asked by our students. Youth Tour culminates in a farewell evening featuring national co-op partner organizations from the financial and insurance sectors and NRECA International, an organization bringing electricity to rural areas in developing countries. The evening centers on challenging and inspiring teens to make an impact in their communities. As conversations evolve, so too do the teens' world view – their definition of community often changes from their home town to a broader meaning.

I can say that nearly all teens who have participated in our Youth Tour program look back with fond memories of an educational, interesting and eventful week. Many make lifelong friends. For a few, Youth Tour is a transformational experience. Parents remark how their child returned noticeably different – more mature, more confident with bigger goals and aspirations; they have a sense of purpose.

### Take the leap

Youth Tour is one of the most important programs that CKenergy undertakes. I am constantly impressed by the caliber of students that our co-op sponsors. Our teens are our future, and it's looking brighter every day. I hope you will consider urging your teen to "take the leap" and join our next Youth Tour delegation.

**F**or many teens, the Rural Electric Youth Tour is full of "firsts." It may be the first time they left the state, flew on a plane, visited the nation's capital or have been away from their family for an extended period of time. Even more are seeing and experiencing the larger world through their own eyes, rather than through their parents' perspective. That's the most important first, as it's truly a "leap" to their next phase and where their journey to adulthood begins.

In preparation for Youth Tour, teens learn about cooperatives, our history and grassroots advocacy. Youth Tour sprang from a suggestion of then Senator Lyndon Johnson to a national gathering of co-ops. Johnson felt youth from rural areas would benefit by visiting Washington to see first-hand how government works and gain a wider perspective through the experience. From this idea, Youth Tour evolved. High school juniors selected by their electric co-ops participate in a weeklong trip

to the nation's capital. The program has grown exponentially since its inception and this year, we saw more than 1,800 high school juniors participate from co-ops in 44 states. Our state typically sends a delegation of 70 students.

### Clean slate

The week is interspersed with visits to many D.C. monuments and sites, including Capitol Hill. Activities with Youth Tour delegations from across the country enable teens to meet a broad spectrum of co-op kids. Our program creates a safe space for teens to discover the adults they are striving to be. Teens leave behind their hometown identity and venture forward with a fresh slate. Students are encouraged to stretch themselves by talking to those they wouldn't ordinarily interact with.

A highlight of Youth Tour includes a meeting with our congressional delegation. Teens learn first-hand that

# Your Spare Change Can Make a **Big Difference** through Operation RoundUp®

Even during tough economic times, it's important that we continue to support our local communities. That's the philosophy behind Operation RoundUp, a charitable program governed, funded and supported by CKenergy Electric Cooperative members like you.

Here's how the program works: As a member of Operation RoundUp, the Cooperative will "round up" the amount due on your electric bill to the nearest dollar. These donations are placed in an account from which an independent panel of CKenergy Electric members makes grants to support various community projects across the Cooperative's service territory. This program has assisted a wide variety of organizations, including local food pantries, senior centers, fire departments and schools. We are happy to continue this program as CKenergy.

For more information call Boyd Lee or Devin Whittington at 405-656-2322.



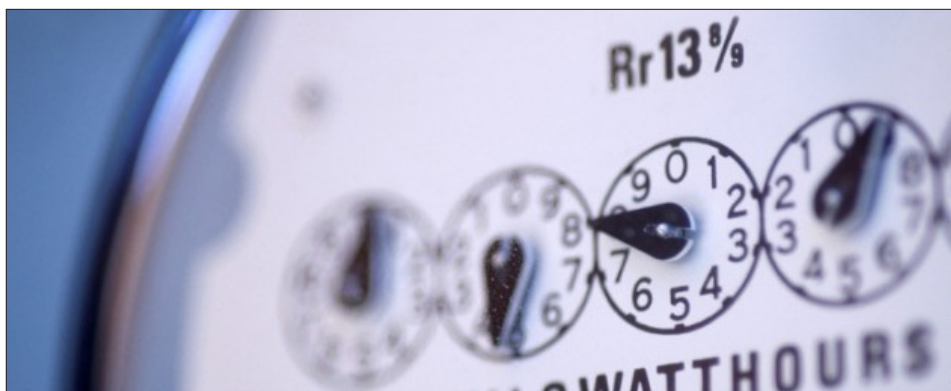
## AT A GLANCE

### Operation RoundUp

- Round up your monthly electric bill to the nearest dollar.
- Contributions will range from \$0.01 to \$0.99 per month.
- Your contributions, pooled with those made by fellow Cooperative members, will help fund charitable projects in the community.
- You can cancel or resume participation at any time.



Small change  
**Big Difference**



## Offset Increased Seasonal Usage

**C**ooler weather is upon us and that can mean increases in electricity usage as switches flip on home heating systems.

CKenergy Electric Cooperative members who want to avoid spikes that come from increased seasonal usage may want to consider having their monthly bills averaged.

Averaged bills are the perfect way to avoid being surprised by the peak usage that comes when more home heating is required.

The Average Monthly Payment Plan offered by the cooperative keeps a rolling average

of a member's last 12 months of usage. That way, they'll pay a more predictable amount each month.

Members who participate in the program can still look at their bills and tell what they would have had to pay for that billing period. Meters are still read monthly for members who pay averaged bills.

Averaged billing simply keeps monthly bills within a similar range. That predictability is something from which the home owner on a budget can benefit.

Members can apply for the Average Monthly Payment Plan by calling the cooperative during normal business hours at 1-405-656-2322.



**T**he 2017 Women in Ag and Small Business Conference will be held on Thursday, November 9, 2017, from 8:30 am to 3:00 pm at the Caddo-Kiowa Technical Center in Fort Cobb, OK. Registration is \$15.00 and includes lunch and a free tote bag.

This conference offers an opportunity for participants to learn and network in a relaxed atmosphere. There will be breakout sessions on Marketing Your Ag/Small Business, Ag Law-Estate Planning, Catfight for the Candlesticks, Farm Program Updates, Backyard Alternative Ag (Bees & Chickens), Ag-Law—Mineral, Water, Wind Rights and Ag Advocacy.

The goal of Women in Agriculture Conference is two-fold; to recognize women for the critical role they play in day-to-day farm and agribusiness activities and to provide risk management information and tools so that participants can make informed decisions concerning their agribusiness and family.

The conference is being hosted by Farm Service Agency, OSU Extension, NRCS, North Caddo Conservation District, West Caddo Conservation District, South Caddo Conservation District and Caddo Kiowa Technology Center.

### Energy Efficiency Tip of the Month



Spending more time in the kitchen during the holiday season? Here's one way to be more energy

efficient: Unplug small kitchen appliances, like toaster ovens and microwaves, when not in use. You could save \$10 to \$20 per year.





# Holiday Cooking Safety

Enjoy a safe holiday by following these tips.



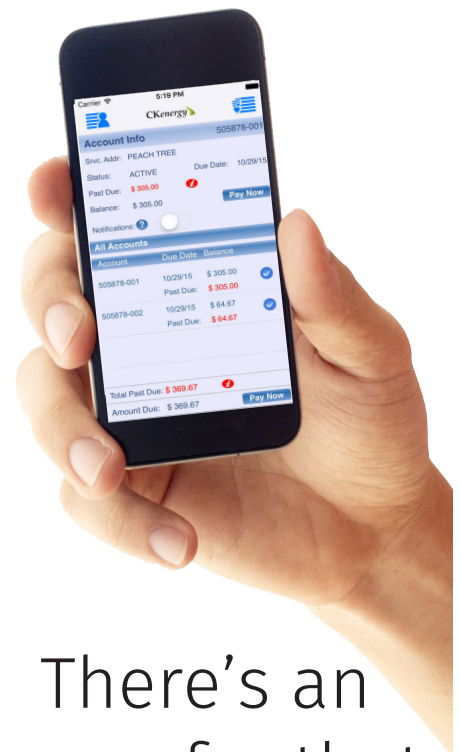
**T**he kitchen is the heart of the home. Sadly, it's also where two out of every five home fires start. Many home fires occur during what's supposed to be the happiest time of the year – the holidays. Thanksgiving, Christmas and Christmas Eve hold a tradition of cooking, and safety should always be considered in the kitchen. As we embark on the holiday season, CKenergy and the Electrical Safety Foundation International (ESFI) urge you to use these simple safety tips to identify and correct potential kitchen hazards:

- Never leave cooking equipment unattended, and always remember to turn off burners if you have to leave the room.
- Supervise the little ones closely in the kitchen. Make sure children stay at least three feet away from all cooking appliances.
- Prevent potential fires by making sure your stovetop and oven are clean and free of grease, dust and spilled food.
- Remember to clean the exhaust hood and duct over your stove on a regular basis.

- Keep the cooking area around the stove and oven clear of combustibles, such as towels, napkins and potholders.
- Always wear short or close-fitting sleeves when cooking. Loose clothing can catch fire.
- To protect from spills and burns, use the back burners and turn the pot handles in, away from reaching hands.
- Locate all appliances away from the sink.
- Plug countertop appliances into ground fault circuit interrupter (GFCI)-protected outlets.
- Keep appliance cords away from hot surfaces like the range or toaster.
- Unplug the toaster and other countertop appliances when not in use.
- Be sure to turn off all appliances when cooking is completed.

For more important safety tips to keep you and your family safe this holiday season and throughout the year, visit [www.esfi.org](http://www.esfi.org).

View, Pay,  
Create,  
Update,  
Alert,  
Report,  
Send &  
Receive?



There's an  
app for that.

Look for the CKenergy EC app on Google Play or the App Store.



**Automotive**

I buy junk cars & farm equipment. 405-641-3344.  
 '02 1500 HD 3/4 ton Chevy Silverado. Crew Cab V8 4x4. 56k miles, one owner, garaged. New Michelin tires. \$11,900. 580-445-5511.

'68 Corvair Convertible. White w/ blue top and interior. Rebuilt engine w/ 15k miles. Big bore kit added 140 HP cam. Elderbrock 4 barrel. Barn kept- 35yrs. 80,580 miles. Automatic. \$5,000 OBO. 405-265-7234.

1940 Ford convertible restored. New paint, interior, tires, 3 speed, flat head motor. \$25,000 firm. 580-331-7304.

1980 Corvette Coupe. 85k miles. Automatic, new tires, carpet, numbers matching. Beige color paint & interior. \$9,995. 405-265-7234.

**Farm/ Equipment**

Marrow's Tractor Tire Repair, Sales, & Service 405-668-0248

7ft. Brush Hog MX7. Almost new. Used very little. 2 tractors- 1- 1947 & 1- 1948, need TLC. 405-352-0827 or 405-613-5731.

Ford Jubilee tractor on propane. 18 gal tank. Needs TLC. Will take best offer. 580-512-6450.

2600 Ford Tractor. 38 HP, 3 point power steering, loader & bucket. New rubber, no

**Swap 'N Shop**  
 For Sale or Trade

*Note: CKEC does not endorse or guarantee any of the products or services in these ads.*

dents. Bad paint. Runs perfect. \$5,000. 580-331-7304.

'76 2440 John Deere Tractor. 5500 hrs, good condition. Call after 6 p.m. 405-247-2900.

1950 M Farmall tractor in good condition. Good paint, power steering, wide front end, excellent pulling tractor in classic pulls. \$9,800 OBO. 580-302-2710.

Husqvarna riding lawn mower. 352 hours. 48 in. cut, 23 HP Briggs & Stratton engine. Runs well. Model # YTH2348. 405-265-7234.

**Livestock/Pets**

Registered Belted Galloway Cattle. Efficient on grass, gentle, great genetics. 580-919-3271.

18 mo registered Red Angus bull. \$2,700. 405-284-6984.

4 Longhorns, 1 bull 4yrs, 1 cow 4 1/2 yrs, 1 heifer 1 1/2 yr, 1 bull 6 mos. 405-641-3344.

Breeding age bulls- 1 Black Angus, 1 Red Angus, 2 Angus-Simmental cross. Express bloodline. 3 free donkeys. 405-651-0059.

**Business**

BackWoods Welding & Construction- Farm & ranch welding, pipe fencing, steel buildings, metal roofs, pole barns, state certified & insured. References available. 405-320-8379.

Welding & Fabrication work. Call Tony, 405-834-1128.

Hooked on Antiques. 209 W Main, Binger. Open Wed. 9:30 a.m.- 5 p.m. Thurs. 9 a.m.- 4:30 p.m. Call 405-202-6563 for more info.

King Cement Services, Eakly, OK. 405-545-2141 or 580-450-7804.

Keith's Tree Trimming- seasonal firewood for sale. 580-660-1237.

Piano Tuning & Repair. Western OK. 580-254-0817 or 580-799-4485.

Fresh Peanuts, Pecans, & Peanut Brittle- Spanish, Honey Roasted, Cocktail, Hot & Spicy, Hunter's Mix, & Roasted and salted in the shell. 580-654-1175. www.gooberhouse.com

**Hay**

Last year's grass hay. Round bales. \$25 each. 580-588-2627.

**Swap 'N Shop Ads are continued on page 8**

Swap 'N Shop is a classified advertisement service that we provide to our members at no cost.

- Members are able to submit written ads through the mail, fax, drop off, or by email.
- Ads are **NOT** taken over the phone.
- Ads need to be received by the 10th of each month to appear in the next month's issue.
- Ad space is limited to a 25 word maximum. **ONE** ad per member.
- Contact the editor at 405-656-2322 for information about availability of ad space.
- CKEC reserves the right to reject any ad deemed inappropriate.
- Ads will automatically run for 2 months, additional run time must be requested **before** the 10th of the month.

**You may submit classified ads, businesses, or services to Swap 'N Shop, P.O. Box 70, Binger, OK 73009, ads@ckenergy.coop, or fax to 405-656-2327. One ad per member unless there is additional space available.**

**Circle category:**

Autos	Farm/Equip	Furn/Appl	Hay/Wood	Livestock/Pets	Misc
	Real Estate	Wanted-Notices	Business		

Name: \_\_\_\_\_

Address: \_\_\_\_\_

Phone # \_\_\_\_\_

CKEC Acct # \_\_\_\_\_

---



---



---



---



---

## Miscellaneous

16' 6 passenger 4 cylinder Chevy inboard boat with OMC outdrive. Good fishing & skiing boat. \$2,000. 405-623-5511 or 405-247-3151.

Stainless steel professional LP smoker. Used twice. 24x24x63 on wheels. 405-651-0059.

Fancy hand made baby afghans. Different colors & sizes. Text 405-640-9068 for pictures and/or questions.

8 drapery panels; pleated at top, gold color lined in white, extra long (84"x120"). Will fit 10' ceiling. Never used. Text 405-640-9068 for pictures and/or questions.

## Furniture/Appliance

Sewing machine, "Signature" in cabinet with accessories. Good condition. Cash only. 580-347-2437.

Baby Grand Piano-Free to good home. Made by The Cable Company Chicago. 580-678-6415.

OES/MASONIC Jewelry. Bride's Bible free if all jewelry is purchased. 405-640-9068.

## Real Estate

Fort Cobb Lake Lots- Crow's Roost area. 3 lots recently cleared & levelled off. 192' wide x 120' deep, 2 water wells, & septic. 405-694-0625.

1 Acre Commercial Zoned. 4 3/4 E of Tuttle on HWY 37. 405-794-4612.

Hunting Lodge- sleeps 6. Rent by week or month with all amenities, all appliances, & new beds. \$500/week or \$1,800/month. Close to Fort Cobb Lake. - Call Wanda. 580-302-3051.

Ft. Cobb Lake (Flying Inn #2) 3 bd, 2 ba, 1456sqft. 30x50 shop. Less than 500ft from water (boat dock), open floor plan, formal din, kit/din,lg covered ft & bk porches. Excellent condition. \$134k 580-772-4663.

60x60 shop w/ living app. 3600 sq. ft. 3000 working. Complete shop with anything you could need. Has heat with 2 lifts. 580-331-7180.

5 acre tract of land. Timber, wildlife. Financing available. Minco school district. Electric & water available. New home site, no trailer homes. 405-352-5190.

528 S. Spencer, Hinton. Completely remodeled. Must see. 3 bd, 2 ba, utility room. Detached garage. 1,450 sq. ft. MOL. 405-306-1538.

2,128 sq. ft. home. 3 bd, 2 1/2 ba. Lg. living room. 5 walk-in closets. Metal roof, all electric. Well kept-40x50 steel bldg. on 5 acres. Grace-mont. Serious lookers only. 580-515-4126.

3 bd, 2 ba brick home. XL lot west edge of Cordell. New Four Seasons sunroom/patio. basement, storage shed, fence, updated throughout. \$199,900. 940-395-1370.

Gracemont: Quiet, small, rural acreage w/ 3b, 1 1/2 ba brick home. Attached garage, storm shelter, shop building, 2 car carport, old barn, water well, close to town, paved road. Reduced to \$79,900. 405-402-0895.

Auto- transmission shop. All equipment w/ it. 60x60x14 building. 6 lots on corner. Built in 05. 580-331-7180.

1 acre commercial zoned. Between Tuttle & Tricity on highway 37. 4 3/4 mi east of Tuttle. 405-794-4612.

3 bd, 1 ba. Carport, storage building, fenced in yard, new kitchen, remodeled bathroom with wood, tile, & carpet floors and new windows. \$83,000, just have to see. 405-952-4171.

Two lots. Well, electricity, 2 metal buildings, 21 ft. Tahoe travel trailer. Used very little but needs repairs. Make offer. Swan Lake area. 405-681-6991.

Cedar Lake Cabin (lot 821). Dock space, 2 bed, 1 bath. 1048 sq. ft. \$65,500. 405-295-2401.

Ft. Cobb Lake north of golf course, south of 77 ranch. Three/two home. Two lots, garage, well water, metal roof. Nice porch with shade. \$95,000. 405-664-0983.

Two acres south of Carnegie. 3 bed, 2 bath trailer. Living room, den, 2 car garage, shop, storage shed, garden shop. 2 cellars. \$75,000. 580-654-2202.

2 adjoining cemetery plots by pond with fountain. Resthaven OKC. \$7,000 OBO. 405-517-2624.

36 acres- surface land, scenic Wichita Mts. 4 miles West of Meers, OK. Bids begin at \$4,200 per acre. Amenities available. Email: Wayne Orrell@gmail.com

120 acres available for oil lease in Washita County- section 6-8-14. 405-794-4612.

Crow's Roost Edition: 2 for 1 mobile homes- 12x60 3bd, 2ba, partially furnished, mobile home. \$30,000. 16X80 3 bed 2 bath, Mobile Home on 64X120 lot. 2 yr old central H&A, new carpet, new hot water tank, new pressure well. Covered porch. 14X30 pole barn, \$70,000. Call for info. 405-664-2262.

302 acres- hunting lease. Deer, turkey, quail, 2 deer feeders, 220 electric pole for trailer. Please send text to 580-215-9207.

## Soft Sour Cream Sugar Cookies

### Ingredients:

#### Cookie Dough

1 cup butter, softened  
1 cup sugar  
2 eggs  
1/2 teaspoon vanilla extract  
3 cups flour, sifted  
1 teaspoon baking powder  
1/2 teaspoon baking soda  
1/2 teaspoon salt  
1/2 cup sour cream

#### Buttercream Frosting

1/4 cup butter, softened  
3 cups powdered sugar  
1 1/2 tsp vanilla  
3-4 Tbsp milk



### Directions:

Heat oven to 375 degrees. Grease a cookie sheet, line it with parchment paper or use a silicone mat. Mix butter and sugar until well combined. Add eggs and vanilla, mix well. Add in all dry ingredients and mix into the wet ingredients alternating with the sour cream, until well mixed.

Chill for 1 hour. Roll out on a floured surface and cut into shapes. Place on greased cookie sheet or one lined with parchment paper.

Bake for 7-10 minutes. Mix all ingredients for frosting in a medium bowl, and cover with plastic wrap until you're ready to frost. Once the cookies have cooled, frost them. You can add a few drops of food coloring to the frosting until it reaches the desired color. Add sprinkles.