

THE BUZZ

for members of CKenergy Electric Cooperative

Holiday Closing

CKEC offices will close Monday, May 30 to observe Memorial Day.

Mark Your Calendar

CKEC's Annual Meeting is scheduled for Friday, August 12.

May 2022

A SUPPLEMENT TO OKLAHOMA LIVING

Cost of Charging an EV Win a Chevy Bolt!

By Brian Coker, Rates and Marketing Manager

CKenergy has driven a Chevy Bolt all electric vehicle for approximately four years. I have been driving it myself for about a year. With rising fuel prices, I get one question more than any other. What does it cost to charge? Well, that depends on where you charge and how much charge is required.

I drive a minimum of 55 miles one way going to and from work. The Chevy Bolt will use about 35% battery capacity during the trip. This equates to 21 kWhs of the 60-kWh battery pack. Remember, the kWhs can vary due to weather conditions, heating, cooling, and driving style. So, a round trip of approximately 42

kWhs multiplied by an average residential electric cost of 12 cents per kWh is a cost of about \$5.00 for 110 miles per day or \$25.00 per week, \$0.05 cents per mile.

Let's compare my old Honda Civic which got around 30 miles per gallon on average. 550 miles divided by 30 mpg is 18.33 gallons needed for the week. Let's assume the current average cost of gasoline in our area is 3.65 per gallon; that is \$66.92, \$0.12 per mile. A big difference as I like to say.

You might also ask, what if I need to charge out on the road? There are more and more retail EV chargers available



all the time. These chargers are mostly what are called stage 3 and will generally charge from 40 kW up to 150 kW at a cost of about 20 cents per kWh. For instance, the Bolt will charge at 42 kW on one of these chargers which means it takes about an hour to get from 20% to 80% charge. New electric vehicles, like the Ford Mustang Mach-e, will charge up to 150 kW and will get to 80% in about 30 minutes. The reason we talk about 80% is that most EVs slow the charging rate past this point to prevent damage of the batteries.

CKenergy purchased these electric vehicles to get an understanding of how they work for our members and the impact they will have on electricity reliability and cost. We have learned it will be critical in the future to monitor when your EV charges to reduce load at peak demand times and minimize your electricity cost. If you are considering purchasing an EV, we encourage you to give us a call and ask about our experience with them. The call can also get you a plug installed for your stage 2 charger, at no cost!

Now for the best part. CKenergy will be giving away the Chevy Bolt at our annual meeting on **August 12th!** We urge you to attend and register for the drawing then stay for good food and entertainment; must be present to win.

CKEC'S ANNUAL MEETING

**FRIDAY
AUGUST 12**

Pioneer Cellular Event Center
Weatherford, OK

Grand Prize

Chevy Bolt

(must be present to win)





PO Box 70 • Binger, Okla. 73009
PO Box 100 • Cordell, Okla. 73632

tele: **(405) 656-2322**
(580) 832-3361

www.ckenergy.coop

OFFICE HOURS:
Monday-Friday,
8:00 am - 5:00 pm.

POWER OUTAGE
HOT LINES

800-868-8243

888-832-3362

BOARD OF TRUSTEES

- Gary Brewster, President
- Jack Sawatzky, Vice President
- Dr. Fred Reuter, Secretary
- John Schaufele
- Mark Slemp
- Robert Travis
- Tony Setzer
- Steve Sweeney
- Walter Hrbacek
- Greg Little
- Glenn Propps
- Don Payne
- John Garland, Attorney
- Clint Pack, CEO

PAYMENT OPTIONS

- Pay online at **www.ckenergy.coop**
- Pay by phone by calling **405-656-2322**, available 24 hours a day. Visa, Mastercard, Discover, or American Express.
- Pay in person at any of our offices: Binger, Cordell, Mustang, and Anadarko.
- Pay via automatic draft of your checking or savings account. To sign up, please visit **www.ckenergy.coop** or call **405-656-2322** or **580-832-3361**.
- **Pay through our CKenergy App available for iPhones or Androids.**



inside this issue | May 2022

- 3** Senior Scholarship
- 4** Storm Ready
- 5** Youth Tour
- 6** Electrical Safety
- 7** Swap'N Shop



MAY

Winning CKEC Members

Jackie Asepermy
Blake Faddis
Tim Galloway

If your name is listed above,
please call us at **405-656-2322**
to claim a \$25 credit on your
electric bill.



Socialize with us!

Stay up-to-date with your co-op and your community by following us on Facebook, Twitter, Instagram, and SnapChat. Get the latest news on co-op events, services, energy saving tips, and more. During a power outage, stay connected with us for updates on the restoration process.

Questions or comments about your newsletter should be directed to Lisa Willard, Director of Communications, CKenergy Electric Cooperative, PO Box 100, Cordell, OK 73632, email: editor@ckenergy.coop.

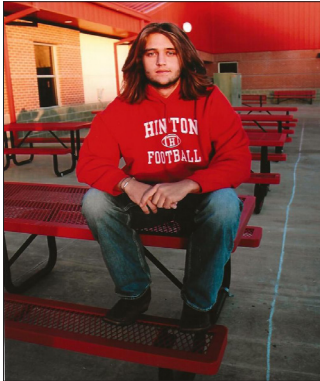
CKenergy Awards \$500 Scholarships

CKEC is pleased to announce the recipients of twelve \$500 scholarships for 2022.

The program is open to any graduating senior who attends high school in our service territory, and whose parents or guardians are members of CKEC. Students were asked to submit an essay

on the following topic: Recount a time when you faced an obstacle, a challenge, setback or failure. How did it affect you, and what did you learn?

Congratulations to all of these students on a job well done. We wish the best for each and every one of you in your future endeavors!



Kase Boling
Hinton High School



Faith Funkhouser
Hobart High School



Kinley Golden
El Reno High School



McKaegan Gregory
Binger-Oney High School



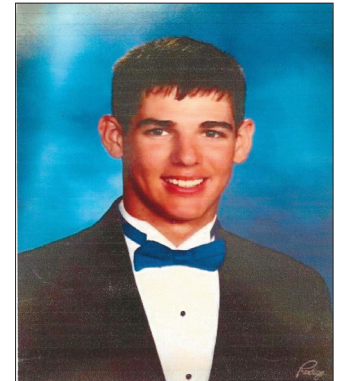
Brett Griffith
Arapaho-Butler High School



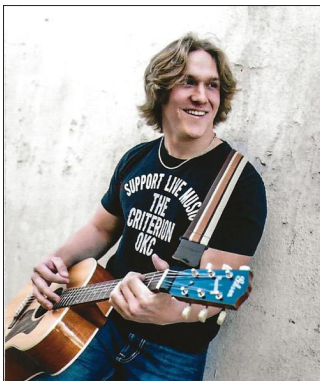
Allison Harvey
Lookeba-Sickles High School



Brielle McDuffey
Anadarko High School



Camden Parker
Fort Cobb-Broxton High School



Jarold Wald
Hobart High School



McKenna Wedel
Cordell High School



Taylor Westervelt
Binger-Oney High School



Dawson Willard
Lookeba-Sickles High School



Safety Before and After Storms

Severe storms are more common in the spring and summer, but they can occur any time of year. Be prepared for storms and know how to stay safe.

Before the storm:

- Assemble a kit of essentials, like water, battery-operated flashlights, and radios. Keep a list of emergency phone numbers, including the electric utility. Be prepared for the possibility of a prolonged outage due to power line and electric equipment damage.
- If severe weather is on its way, pay attention to local weather reports and recommendations. A tornado or severe storm watch means conditions are favorable for those weather conditions forming. A warning means dangerous weather conditions are developing.
- Lightning can travel up to ten miles away from a storm, so seek shelter when you hear thunder.
- Consider installing ground fault circuit interrupters (GFCIs) or

purchasing a portable GFCI. GFCIs detect dangerous electrical situations and cut off power before a person can be shocked. These dangerous electrical situations are likely to occur around water, so GFCIs should be installed in bathrooms, laundry rooms, kitchens, basements, outdoors and anywhere else water and electricity may meet.

- If power goes out, switch off lights, large electronics and appliances to prevent overloading circuits and damaging appliances when power is restored. Leave one lamp or switch on as a signal for when your power returns.

After the storm:

- When venturing outside, stay away from downed power lines and be alert to the possibility that tree limbs or debris may hide an electrical hazard. Assume any dangling wires you encounter are energized and dangerous. Warn others to stay away and contact the electric utility.

- If you are driving and come upon a downed power line, stay in your vehicle, warn others to stay away, and contact emergency personnel or electric utility. Also, when driving, be careful at intersections where traffic lights may be out. Stop at all railroad crossings and treat road intersections with traffic signals as a four-way stop before proceeding with caution.
- Before re-entering storm-damaged buildings or rooms, be sure all electric and gas services are turned off. Never attempt to turn off power at the breaker box if you must stand in water to do so. If you can't reach your breaker box safely, call your electric utility to shut off power at the meter.
- Never step into a flooded basement or other area if water is covering electrical outlets, appliances, or cords. Be alert to any electrical equipment that could be energized and in contact with water. Never touch electrical appliances, cords, or wires while you are wet or standing in water.
- Do not use water-damaged electric items until a qualified electrician has inspected them and ensured they are safe.
- When using a portable generator, follow all manufacturers' recommendations. Keep the generator dry and never plug it into a wall outlet or directly into the home's wiring. This could inadvertently energize the utility lines and injure yourself or others working to restore power.
- A permanent standby generator should be professionally installed and include a transfer switch to prevent electricity from leaving your generator and going into power lines where it can kill line workers.



John Thomas Clinton
Carnegie High School



Mary Horton
Lone Wolf High School



Adrian Leal
Binger-Oney High School



Alexa Schaufele
Hobart High School



Haley Combs
Hinton High School



Addy Hoffman
Weatherford High School



Adam Lindsey
Cordell High School



Rolando Torres
Binger-Oney High School

Teens Win Youth Tour Contest

Hard work has paid off for four high school juniors. The winners earned an all-expense paid trip to Washington D.C. this summer and a \$500 scholarship.

John Thomas Clinton of Carnegie High School, Mary Horton of Lone Wolf High School, Adrian Leal of Binger-Oney High School, and Alexa Schaufele of Hobart High School took top honors.

John Thomas is the son of Johnny Lee and Rachelle Clinton of Carnegie. Mary is the daughter of Lee and Margrett Horton of Lone Wolf. Adrian is the son of Chris and Brandie Leal of Gracemont and Alexa is the daughter of Brad and Julie Schaufele of Lone Wolf.

Runners-up in the contest were Haley Combs of Hinton High School, Addy

Hoffman of Weatherford High School, Adam Lindsey of Cordell High School, and Rolando Torres of Binger-Oney High School. The runners-up receive a \$500 scholarship.

In order to reach the finals, the contestants had to be one of the eight highest scores on a written letter/essay. Contestants were required to write a letter of 500 – 750 words in length. The letter can be to anyone of importance on a topic that is important to them. The contest concluded with each student presenting their letter in speech form through a video. Judges scored the students' videos on speaking ability, poise, and projection.



Prioritize Safety Year-Round

At CKenergy Electric Cooperative, we recognize Electrical Safety Month every May, but we also know the importance of practicing safety year-round. From our co-op crews to you, the consumer-members we serve, we recognize that everyone has a part to play in prioritizing safety.

According to the Electrical Safety Foundation International, thousands of people in the U.S. are critically injured or electrocuted as a result of electrical fires and accidents in their own homes. Many of these accidents are preventable. Electricity is a necessity, and it powers our daily lives. But we know first-hand how dangerous electricity can be because we work with it 365 days a year.

Safety is more than a catchphrase. It's CKEC's responsibility to keep co-op employees safe. Additionally, we want to help keep you and all members of our community safe.

Electricity is an integral part of modern life. Given the prevalence of electrical devices, tools and appliances, we'd like to

pass along a few practical electrical safety tips.

Frayed wires pose a serious safety hazard. Power cords can become damaged or frayed from age, heavy use or excessive current flow through the wiring. If cords become frayed or cut, replace them.

Avoid overloading circuits. Circuits can only cope with a limited amount of electricity. Overload happens when

qualified electrician if your home is more than 40 years old and you need to install multiple large appliances that consume large amounts of electricity.

Use extension cords properly. Never plug an extension cord into another extension cord. If you "daisy chain" them together, it could lead to overheating, creating a potential fire hazard. Don't exceed the wattage of the cord. Doing so also creates a risk of overloading the cord and creating a fire hazard. Extension

cords should not be used as permanent solutions. If you need additional outlets, contact a licensed electrician.

We encourage you to talk with your kids about playing it safe and smart around electricity. Help them be aware of overhead power lines near where they play outdoors.

Our top priority is providing an uninterrupted energy supply 24/7, 365 days per year. But equally important is keeping our community safe

PLUG INTO SAFETY



ELECTRICAL SAFETY MONTH

Make electrical safety a priority this month, and every month.

you draw more electricity than a circuit can safely handle--by having too many devices running on one circuit.

Label circuit breakers to understand the circuits in your home. Contact a

around electricity.

For more information about electrical safety, visit [Safe Electricity.org](https://www.safeelectricity.org).

Automotive

1979 Dodge power wagon truck. 36,000 original miles. Runs good. 580-339-3037.

1946 Ford Coupe. Been in covered storage on blocks since 19985. V8 engine flat head. 405-779-1091.

302 Ford engine and C4 auto trans. Complete from oil pan to air cleaner. All new parts. \$1700 405-256-0270

Farm/ Equipment

820 John Deere, will run. 80 JD - needs work. \$2500 for both 580-331-7304

16' trailer - 6 ton limit. Heavy duty. Can haul heavy equipment or vehicle. Pedulum type hitch. \$4500. 405-570-8288.

Allis Chambers tractor WD45, 2WD. Good rubber on tires, runs on propane, factory propane. \$2,000. 580-583-3231.

Livestock/Pets

Better bulls. Add more profit with big, stout bulls with low birth weights that will sire calves with faster growth and more muscle. Kusel Limousin and Lim-flex. Call John. 580-759-6038.

Swap 'N Shop

For Sale or Trade

Note: CKEC does not endorse or guarantee any of the products or services in these ads.

Red angus bulls, service age, gentle, several A.I. sired. Call or text 580-450-1735.

Four year old red angus bull. Leave message. 580-919-5490.

Business

Paving Maintenance, 405-245-6759. Cooks Septic Service. Septic tank pumping and insections. 580-550-0545.

C and K Trucking. 20 years exp. Hauling heavy equipment, dozers, excavators, loaders and tractors. 405-395-7758.

Liner replacement for semi end dump trailers. 405-638-1158.

Award winning decks, pergolas, outdoor kitchens, firepits, outdoor fireplaces, cedar fence. 405-834-3411.

Shook's Triple S Construction. Metal carports, awnings, and more. Built

on site to meet your needs. Free estimates. 405-413-7590.

Custom apparel printing and embroidery for your personal or business needs. No orders too small. We can print one or more. Special rates for fundraisers and not for profit groups. www.countrychickdesign.com

Mobile welding. Welding and fabrication. Call Tony at 405-834-1128.

Loud Mountain Trading Co. Cement, OK. Over 90 local artisans and craftsmen. Premium ice cream. Monday-Saturday 10-6 p.m. LoudMountainTradingCo.com

www.CowgirlBeef.com. Quality beef you can afford. Ranch-raised calves finished for 120+ days and processed in OK. Buy 1 cut or the whole beef. 619-884-0970. cf2cattle@gmail.com

Door and window installation and repair. Free estimates. JD DE Shazo Construction 405-245-4042.

Miscellaneous

C and K trucking heavy haul tractors, dozers, backhoes, trackhoes, loaders. 20

Swap 'N Shop Ads are continued on page 8

Swap 'N Shop is a classified advertisement service that we provide to our members at no cost.

- Members are able to submit written ads through the mail, fax, drop off, or by email.
- Ads are **NOT** taken over the phone.
- Ads need to be received by the 5th of each month to appear in the next month's issue.
- Ad space is limited to a 25 word maximum. **ONE** ad per member.
- Contact the editor at 580-832-3361 for information about availability of ad space.
- CKEC reserves the right to reject any ad deemed inappropriate.
- Ads will automatically run for 2 months, additional run time must be requested **before** the 5th of the month.

You may submit classified ads, businesses, or services to Swap 'N Shop, P.O. Box 100, Cordell, OK 73632, ads@ckenergy.coop, or fax to 580-832-5174. One ad per member unless there is additional space available.

Circle category:

Autos Farm/Equip Furn/Appl Hay/Wood Livestock/Pets Misc
Real Estate Wanted-Notices Business

Name: _____

Address: _____

Phone # _____

CKEC Acct # _____

yrs. experience. 405-395-7758.

Jeans and pants hemming and minor alterations. Tuxes, accessory sales and rentals. Settle Studio. 405-247-5142.

Heavy duty fire pits. 24-48". Free standing. 580-819-0695.

Heavy Haul: tractor, dozers, backhoes, loaders, trackhoes. 20 years experience. 405-395-7758.

2008 36' HH 5th wheel, four slides. Two western jackets 46 R, three western hats 7 1/8. 405-919-0980.

Recreational Trailer, 19 ft, 2004. Travel Cruiser. Good Condition. \$5,000. Call or text 580-773-8513.

Old gumball machine \$80. Student desk \$65. Old fan \$80. Old tricycle \$90. 48" round oak table and six chars \$600, matching hutch \$150. 405-256-0270.

Knitting machines and all accessories. Approximately 10 of them. \$1500 for all or best offer. 405-659-1171.

49 JFK Jr. "Geroge magazines" plus "Last will and testament of Jacqueline Kennedy. 405-797-2915.

Heavy built fire pits. Can be built with or without removable grill. Made out of propane tank ends. Prices range from \$200 to \$450. 580-819-0695.

6' BushHog, like new. Lumber: 3x12x16xLVls. Kenmmore sewing mahcine. 1993 Lincoln Cont. Mark VII. 580-695-4589

T-shirt quilts and memory bears. Alterations. 405-933-0224.

Milbank generator 6750 starting watts. 5500 running watts .120/240 gasoline. \$500 firm, New. 405-609-0299.

\$100 Agreed Divorces. JNK Paralegal Service. www.jnkparalegal.com JNKparalegal@aol.com 405-376-2206.

Goober House. Fresh peanuts of many varieties, pecans, and peanut brittle. 580-515-5821. www.Goobehouse.com

4-Mag wheels and tires off 2019 camaro. Like new. 18 in. \$475. 405-439-7571.

The coaxman quality coaxial cables/ wire for amateur and C.B radio. Cable assemblies any length. 405-376-9473 www.coaxman.com

Real Estate

Hunting, fishing and vacation cabin rental at Ft. Cobb lake. 580-243-8697.

5 acres tract of land. Minco school. 405-574-2980.

Swan Lake. 4 bd. 2 bath, central H/A, wood stove, carport, garage. \$60,000 or best offer. 580-747-3672.

Home on 1.5 acres in Eakly. Lovingly maintained with 3 bed/3bath. Living room and den. 580-330-9090. www.goldbucklerealty.com

Wanted-Notices

Old toys wanted 1950-1989. Hot wheels, GI Joe, star wars, super heroes, model car kits, and trading cards. 405-361-2227.

Gas portable stick welder/generator unit around 185 to 225ac. 405-247-8843.

Two used tires for old crap metal trailer. 15 inch 95L 405-638-0466.

Hay/Wood

Grass Hay for sale. \$45 per round bale. 405-613-5731.

Grilled Brown Sugar Mustard Chicken

Ingredients:

½ cup yellow or dijon mustard
⅓ cup packed brown sugar
½ tsp. ground allspice
¼ tsp. curshed red pepper flakes
8 boneless skinless chicken thighs (about 2 lbs.)



Directions:

In a large bowl, mix mustard, brown sugar, allspice and pepper flakes. Remove 1/4 cup mixture for serving. Add chicken to remaining mixture; toss to coat.

Grill chicken, covered, over medium heat or broil 4 in. from heat 6-8 minutes on each side. Serve with reserved mustard mixture.