



THE BUZZ

for members of CKenergy Electric Cooperative

Youth Deadlines

Senior Scholarship - March 8.
Energy Camp - April 9.

Holiday Closing

CKEC offices will close April 2
to observe Good Friday.

March 2021

A SUPPLEMENT TO OKLAHOMA LIVING



What is Beneficial Electrification?

If you're like most Americans, you're interested in saving money on energy costs and in doing your part to help the environment. But wouldn't it be great if you could do both? Well, you can! It's through a concept called "beneficial electrification." This utility industry term means the innovations in energy technologies are creating new ways to use electricity instead of on-site fossil fuels, such as propane, natural gas and fuel oil, in a way that reduces overall emissions and energy costs.

In essence, by virtue of being plugged into the grid, the environmental performance of electric devices improves over time. As CKenergy and other utilities shift to more options that include renewable energy sources to make existing generation technologies cleaner, electricity will require less fossil fuel per kilowatt-hour of energy produced.

So, here's how this concept impacts you. It means that electric appliances such as your water heater, clothes dryer, oven

and even your lawn care equipment have the potential to become greener. When CKenergy Electric Cooperative takes advantage of advances in technology and the market at the generation point (how the electricity is produced), it means those efficiencies are passed along to you.

Electricity is getting cleaner

Because large appliances have a typical lifespan of about 10 years, it means that you are able to benefit from the flexibility of the grid in addition to the increased efficiency of the particular appliance. In other words, the high efficiency electric oven you have today could be powered by renewable sources in the near future. This would not be the case with gas appliances where you are essentially locked into the technology of that gas appliance for the 10-year lifespan.

Small steps to help the environment

For consumers and homeowners looking for more environmentally-friendly

options, choosing electric appliances, tools and cars over those powered by fossil fuels is an easy solution. Whether through electric lawn mowers, blowers and weed whackers (plug-in or rechargeable) or through electric water heaters and other appliances, beneficial electrification is a means to reducing greenhouse gases and helping our environment. It can also translate into a better quality of life.

Doing our part to help the environment

As the overall energy sector continues to evolve, CKenergy is striving to take advantage of the advances in technology and the opportunities of the market as they become available. This means CKenergy can leverage the flexibility of the grid to offer a wider range of renewable power selections as we continue to bring safe, reliable and affordable power to our community.

We also promote energy efficiency through programs like geothermal. In addition, through our CKenergy app, we offer our members the convenience and ability to manage and monitor their energy use.

We care about our community because we live here too. I hope you'll reach out to CKenergy, your trusted energy partner, to discuss available renewable energy options and to learn about more ways to reduce your energy use. Because when you participate in the energy efficiency programs and incentives we offer, you're doing your part to save energy and better our environment. While each member's reduction might be small, together, they can lead to significant savings of money and emissions. And that means a brighter future for all of us.



PO Box 70 • Binger, Okla. 73009
PO Box 100 • Cordell, Okla. 73632

tele: **(405) 656-2322**
(580) 832-3361

www.ckenergy.coop

OFFICE HOURS:
Monday-Friday,
8:00 am - 5:00 pm.

POWER OUTAGE
HOT LINES
800-868-8243

888-832-3362

BOARD OF TRUSTEES

Gary Brewster, President

Jack Sawatzky, Vice President

Dr. Fred Reuter, Secretary

John Schaufele

Mark Slemp

Robert Travis

Tony Setzer

Steve Sweeney

Walter Hrbacek

Greg Little

Glenn Propps

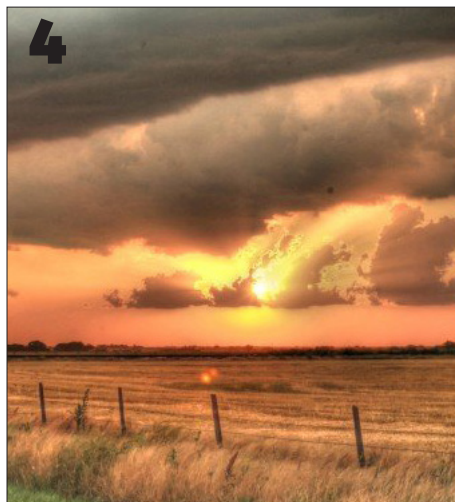
Don Payne

John Garland, Attorney

Clint Pack, CEO

PAYMENT OPTIONS

- Pay online at www.ckenergy.coop
- Pay by phone by calling **405-656-2322**, available 24 hours a day. Visa, Mastercard, Discover, or American Express.
- Pay in person at any of our offices: Binger, Cordell, Mustang, and Anadarko.
- Pay via automatic draft of your checking or savings account. To sign up, please visit www.ckenergy.coop or call **405-656-2322** or **580-832-3361**.
- **Pay through our CKenergy App available for iPhones or Androids.**



inside this issue | March 2021

- 3** Energy Camp
- 4** Storm Safety
- 5** Tree Planting
- 6** Kitchen Appliances
- 7** Swap'N Shop



MARCH

Winning CKEC Members

Terry Laberde
Dustin Tackett
Evan Unruh

If your name is listed above, please call us at **405-656-2322** to claim a \$25 credit on your electric bill.



Socialize with us!

Stay up-to-date with your co-op and your community by following us on Facebook, Twitter, Instagram, and SnapChat. Get the latest news on co-op events, services, energy saving tips, and more. During a power outage, stay connected with us for updates on the restoration process.

Questions or comments about your newsletter should be directed to Lisa Willard, Director of Communications, CKenergy, PO Box 100, Cordell, OK 73632, email: editor@ckenergy.coop.



Teens from across the state attend Energy Camp every year

Energy Camp Promises Summer Fun

Hurry, the deadline to enter is April 9

CKenergy Electric Cooperative and the Oklahoma Association of Electric Cooperatives are busy preparing for 2021 Youth Power Energy Camp. The camp takes place at Camp Canyon near Hinton, OK. Slated for June 1-4, 2021, Energy Camp is designed to help students build leadership skills while having lots of fun.

By forming their own cooperative, students gain leadership and business skills while interacting with other eighth graders from across the state. Campers also have the opportunity to attend sessions on energy, electrical safety and rural electric careers. They also elect their own board of directors and operate a coke and candy cooperative. Safety demonstrations by cooperative linemen give campers a chance to try their hand at riding bucket trucks and climbing poles.

That's not all. Campers start the adventure out right by making new friends and taking part in fun activities including volleyball, swimming, ping pong, hiking and a special trip to Celebration Station.

CKenergy will select two teams of two students or four individuals to attend the camp based on a 100-word essay. One essay entry per team is allowed. The essay topic is "What I would miss the most without electricity and why."

Eligible students must be eighth graders currently attending a school in CKEC's service territory.

CKEC covers all expenses related to the camp including transportation to and from Camp Canyon. For more details, please visit www.CKenergy.coop or contact Lisa Willard at 405-656-9174.



2021 ENERGY CAMP CONTEST RULES

Students must currently be classified as eighth grade students attending a school in CKEC's service territory. The students will be required to write an essay of at least 100 words in length on the topic, **"What I would miss most without electricity."**

Essays are to be written legibly or typed, double spaced on only one side of the paper. Attach a cover page which includes name, parent's name, address, phone number, school, and shirt size.

1. Essays will be judged on the basis of knowledge of subject, 40%; originality, 30%; composition, 15%; grammar, spelling and punctuation, 15%.
2. Deadline for essays is April 9, 2021.
3. Dates for the 2021 Youth Power Energy Camp are June 1-4, 2021.

Submit the completed essay and cover sheet to Lisa Willard, CKenergy P.O. Box 100, Cordell, OK 73632.



Storm Safety: When Thunderstorms, Tornadoes Strike

Beware. Spring can usher in more than April showers. Now through the summer months, thunderstorms can quickly roll in and tornadoes can touch down, often during the afternoon and evening hours, according to researchers at the National Oceanic and Atmospheric Administration's (NOAA) National Severe Storms Laboratory.

Follow these tips from NOAA and the American Red Cross to keep you and your home safe when tornadoes and severe thunderstorms come your way.

- Prepare for high winds by removing diseased and damaged tree limbs.
- Listen to local news or National Weather Service broadcasts to stay informed about tornado watches and warnings.
- If in a mobile home, immediately head to a sturdy shelter or vehicle. Mobile homes, especially hallways and bathrooms, are not safe places to take shelter during tornadoes or other severe winds.
- Designate a family meeting place for shelter during and after a storm. If possible, go to your home's basement, a small interior room, or under stairs on the lowest level. Have emergency supplies on hand and ready to go.



- Unplug your electronics. Avoid using electrical equipment and corded telephones.
- Remember that there is no safe place outside during a severe storm. If you are caught in a storm while on the road, the American Red Cross urges drivers to turn their headlights on, try to safely exit the roadway, and park. Stay in the vehicle with your seat belt on and turn on the emergency flashers until the heavy rain ends. If thunder and lightning is occurring, avoid touching metal or other surfaces that conduct electricity in and outside the vehicle.

- Move or secure lawn furniture, trash cans, hanging plants or anything else that can be picked up by the wind and become a projectile.
- Stay safe after a storm. Remain indoors at least 30 minutes after the last clap of thunder. Also, stay away from downed power lines and avoid flooded areas, power lines could be submerged and still live with electricity. Report them to CKenergy at **1-800-868-8243** or **1-888-832-3362**.

Lightning Safety Tips

When **thunder roars, go indoors.**

Seek shelter immediately. There is **no safe place outside** during a thunderstorm.

Safe shelter can be found in **an enclosed building or a hard-topped vehicle**

Keep as many walls as possible between you and the outside.

Only use battery-operated appliances.

Wait 30 minutes after the last lightning strike in a severe storm before venturing outside.

Stay away from items that conduct electricity: corded telephones, appliances, sinks, bathtubs, radiators and metal pipes.

The Weather Network
Your weather when it really matters™



Oakley is sporting her new CKenergy stocking hat. Oakley is the daughter of Clay and Addy McCullough and granddaughter of CKEC employee Brian McCullough.



Choose the Right Tree for the Right Place

Whether planting trees to provide a wind break, shade, reduce carbon in the environment, or to beautify your landscape, Safe Electricity reminds everyone of the importance of planting tall-growing trees safely away from power lines.

Trees that grow too close to electric lines can create shock and fire hazards and power outages. Trees and wood conduct electricity, causing outages or momentary interruptions when branches touch overhead lines. Electrical arcing and sparking from a wire to a nearby branch also can cause fires.

Safe Electricity urges parents and caregivers to teach children never climb trees near power lines. Accidental contact of electric wires with a tree limb while climbing or playing around the tree can be fatal.

Landowners must understand utility line tree trimming and clearance practices, and why they're important to safe and reliable electric service. If you have trees that appear to be growing into power lines, contact your electric utility. Never try to prune them yourself. Utilities have or can recommend skilled professionals trained to prune and trim trees for electric line clearance safely.

Seek help in choosing and placing trees that provide shade, color, and screening that won't grow to interfere with the electric supply. When landscaping, take the time to research tree selections by consulting your local arborist, tree nursery, or utility – experts who can assist in designing a beautiful, shade-filled yard with trees appropriate for each area.

To avoid future electrical hazards, safe planting tips include:

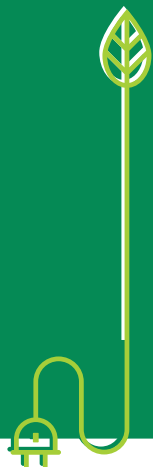
- Consider mature height of trees. Never plant a tree that could grow to 25 feet or more near a power line. Tall growing trees should be planted at least 20 feet away from power lines and 50 feet away to avoid future pruning. A mature height of less than 15 feet is recommended for trees planted near power lines.
- Do not plant near underground utility services. Tree roots can grow to interfere with underground pipes, cables, and wires. Future repairs to these facilities also could damage the health and beauty of nearby plants and trees.
- Keep areas around electric meters, transformers, or other electrical equipment free of any vegetation that could limit utility service access.
- Before digging, call the local underground utility locator service to mark location of underground utilities, so accidental contact, damage, and injuries can be avoided.

There are many beautiful varieties of trees, low-growing trees and shrubs that provide color, screening and shade, and enhance the quality of life in our communities and environment. Consider the types of trees that co-exist well with power lines and the environment to avoid the need for trimming for line clearance.

Energy Efficiency Tip of the Month

Don't keep your refrigerator too cold. The Department of Energy recommends a temperature setting of 35 to 38 degrees for the fresh food compartment and zero degrees for the freezer. Make sure the refrigerator doors are sealed airtight to maximize efficiency.

Source: www.energy.gov





Three Electrifying Kitchen Appliances

Save Time and Energy

Whether your oven and stove top are powered by gas or electricity, it's no secret that they consume more energy than smaller countertop appliances, like slow cookers and toaster ovens. In addition to efficiency, smaller kitchen appliances can provide faster cooking times and less hassle with cleanup.

If you're looking for convenient cooking methods with the added bonus of energy efficiency, here are three electrifying appliances for your kitchen:

1. Air fryers are becoming increasingly popular, and consumers have a lot of good things to say about these handy little appliances. Air fryers use convection to circulate hot air and cook the food—this means little to no oil is required, resulting in healthier meals than those from traditional fryers. Air

fryers are fairly small, so they won't take up much of your counter space, and with everything cooked in the fryer, cleanup will be a breeze. Air fryers are available in a variety of sizes, and prices range from \$40 to \$200+.

2. Electric griddles have certainly been around for a while, and they offer several benefits for any home chef (beyond bacon and eggs!). Griddles are convenient because you can cook everything at once—like a “one-pan” meal, and the possibilities are endless. From fajitas to sandwiches to French toast, griddles can help satisfy any taste buds. They consume small amounts of energy and provide quick cooking times, so your energy bill will thank you. Prices and sizes for griddles vary, but you can typically find one for about \$30 at your local retail stores.

3. Pizza brings people together, so why not consider a pizza maker for your kitchen? These compact, countertop machines are an inexpensive alternative to a costly brick oven, and they use less energy than your traditional oven. Choose your own fresh ingredients to whip up a faster, healthier pizza at home. Plus, most pizza makers are multifunctional and can be used to cook flatbreads, frittatas, quesadillas and more. You can purchase a pizza maker for about \$30 to \$150+ online or at your local retailer.

These are just a few electrifying appliance options for your kitchen. Remember, when you're cooking a smaller meal, countertop appliances can save time and energy. To learn about additional ways to save energy at your home, visit www.CKenergy.coop.

Automotive

1940 Ford convertible restored. Original drive train. New upholstery and top. New paint and tires. 580-331-7304.

1992 Cadillac Allante 69,900 miles. Pearl white with black convertible top. Tan seats. Excellent condition. One owner. Call for details and photos. 405-250-5396.

193,000 miles. Good solid car starts and runs great. \$1,000 405-315-0328.

83 Chev. van. New tires. 580-637-2520.

Farm/ Equipment

1941 John Deere, 1939 John Deere. Both restored. Spoke wheels and new tires. Original. \$7500 both. 405-834-0825.

2020 Trip Hopper. 3,000 capacity. Model #T-856. Like new. \$5900. 580-445-6152 or 937-286-9897.

1950 For 8N Tractor. Completely restored. 580-483-8537.

Livestock/Pets

Gentle, genetic superior bulls. Easy calving, more growth and muscle. Make money with Kusel Limousin bulls. Call

Swap 'N Shop

For Sale or Trade

Note: CKEC does not endorse or guarantee any of the products or services in these ads.

John, 580-759-6038.

Red angus bulls, service age, gentle, several A.I. sired. Call or text 580-450-1735.

Four year old red angus bull. Leave message. 580-919-5490.

Business

Mooters hay and cattle hauling. 405-668-0213 Dirt work, land clearing, stumps, ponds. Fletchers backhoe. 405-519-2718.

Parking lot maintenance, crack ,asphalt sealing overlay, potholes, striping and signage. 405-245-6759.

Cooks Septic Service. Septic tank pumping and insecptions. 580-550-0545. Mainstreet 420 Shop. Medical cannabis. 405-687-5004.

Mainstreet 420 Shop. 417 W. Main, Binger. Mon.-Sat. 11 a.m. - 7 p.m. and Sun. 1 p.m.-7 p.m. 405-687-5004.

Heavy haul of tractor dozers. backhoes, loaders, etc. 20 years of experience. 405-395-7758.

Liner replacement for semi end dump trailers. 405-638-1158.

Award winning decks, pergolas, outdoor kitchens, firepits, outdoor fireplaces, cedar fense. Design. 405-834-3411

Shook's Triple S Construction. Metal carports, awnings, and more. Free estimates. 405-413-7590

Miscellaneous

Heavy duty fire pits. Built out of propane tank ends. Free standing. 580-819-0695.

200 bales. 2020 wheat hay. 4x6 round bales avg. 1050-100 lbs. \$50 per ton. 405-320-0884.

Bales of grass hay. \$45 per bale. 405-613-5731.

C and K trucking heavy haul tractors, dozers, backhoes, trackhoes, loaders. 20 yrs. experience. 405-395-7758.

Swap 'N Shop Ads are continued on page 8

You may submit classified ads, businesses, or services to Swap 'N Shop, P.O. Box 100, Cordell, OK 73632, ads@ckenergy.coop, or fax to 580-832-5174. One ad per member unless there is additional space available.

Circle category:

Autos Farm/Equip Furn/Appl Hay/Wood Livestock/Pets Misc
Real Estate Wanted-Notices Business

Name: _____

Address: _____

Phone # _____

CKEC Acct # _____

Swap 'N Shop is a classified advertisement service that we provide to our members at no cost.

- Members are able to submit written ads through the mail, fax, drop off, or by email.
- Ads are **NOT** taken over the phone.
- Ads need to be received by the 5th of each month to appear in the next month's issue.
- Ad space is limited to a 25 word maximum. **ONE** ad per member.
- Contact the editor at 580-832-3361 for information about availability of ad space.
- CKEC reserves the right to reject any ad deemed inappropriate.
- Ads will automatically run for 2 months, additional run time must be requested **before** the 5th of the month.

2018 Bighorn Traveler 39MB Fifth wheel. Four slides, fireplace, washer, drer, outside grill, central facuum, excellent condition. Colony. 903-701-7888.

1986 Lincoln gas welder. S.A. 200. good leads, good machine. \$3,500. 405-929-9410.

Reclining living room set from Bob Mills. One year old. Excellent condition. No animals or kids on them. Blue gray color. Will sell couch and loveseat separate. \$1500. 405-256-0270

Inogen one porable oxygen conentrator with two double batteries, carry bag, all manual and plugs. less than one year old. \$1595. 405-659-9737.

Jeans and pants hemming and minor alterations. Tuxes, accessory sales and rentals. Settle Studio. 405-247-5142.

Silver parade, saddle, bridle, and chest strap. Black-cement. 817-229-5663.

Heavy duty fire pits. 24-48". Free standing. 580-819-0695.

Winchester model 770. 30:06. Good condition. Bushness 3x9x50 firefly scope, strap, ammo, sighted in. Ready to go. \$600. 405-213-4126.

Real Estate

For Rent: 2bd/2ba north side of lake. \$500/month, \$00 deposit. No pets. 580-302-3051.

Country Living: 3bd south of Binger. 580-302-3051. No pets. \$600/month, \$500 deposit.

FOR RENT: Foss Lake, house weekends or weekly. 5bd/2 1/2ba for party barn, great for reunions, both cool, fully equipped. 580-214-0178. www.bigtretrat.com.

43 acres mol, Minco. Goregeous 4,025 sq. ft. home, Geothermal HVAC, inground pool, shelter, 50x50 barn, gated entrance. Call Diane Denison, 405-919-7457.

For Rent: Vacation Cabins at Foss Lake. Quiet neighborhood, no smoking, no pets. 580-515-6452.

Vacation Rental Cabin. Fort Cobb Lake, right on the edge of the water. Room to park boat and trailer. 580-243-8697.

House for Sale: 904 N Broadway Avenue, Hydro, Oklahoma. 1650 sq. ft. 3bd/2ba, all electric. Wood burning fireplace, 10 ft. ceiling in living room, large walk-in closets, bay windows in dining room look out onto a beautiful shaded, fenced in back yard. Cellar on patio, large storage building. Corner lot with mature trees and a garden spot. Asking \$180,000. 580-816-0293.

Want to run your own business? Roger Mills County's only newspaper is for sale! Thriving business with proven success.

For Rent: 2 lg bd, lg kitchen, living room, den, 1/2ba, washroom, alarm & internet, carport. No Pets. \$600/mo. 580-302-3051. For Rent: small 2bd/1ba, \$400/mo, \$300 dep. South Side Ft. Cobb Lake. 580-302-3051.

Vacation cabin rental. Great for hunting, fishing at Ft. Cobb lake. Room for trailer and boat. Next to water. 580-243-8697.

20 acres (mol) with large custom home and barns. Private and secluded. www.goldbucklerealty.com 580-330-9090.

House for rent near Ft. Cobb lake. Two bedroom. 405-826-6376.

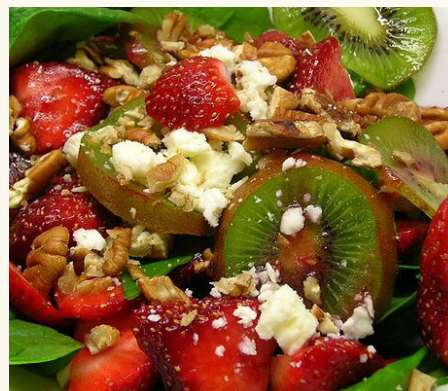
Events

Clinton Country Jamboree: Showtime 7:00 p.m. 1st Saturday every month. Admission \$10.00. Concession available. Family Entertainment. I-40 ext 71, Clinton, OK. 580-331-8377.

Strawberry, Kiwi, and Spinach Salad

Ingredients:

3 Tbsp. raspberry vinegar
2 1/2 Tbsp. raspberry jam
1/3 cup vegetable oil
8 cups spinach, rinsed and torn into bite-size pieces
1/2 cup chopped walnuts
8 strawberries, quartered
2 kiwis, peeled and sliced



Directions:

Mix together raspberry vinegar, raspberry jam, and vegetable oil in a small container.

Combine spinach, nuts, strawberries, and kiwi in a salad bowl. Toss with raspberry dressing.