

What You're Missing at Annual Meeting



Did you know every cooperative is required to conduct an annual meeting of the membership? The purpose is to share important financial information, occasionally vote on other matters such as by-law changes and of course—the great door prizes!

CKenergy Electric Cooperative's annual meeting is a community gathering where neighbors can meet new neighbors—or catch up with old acquaintances. As our lives get busier with the “errands of life” and more of our interactions with others are online (via social media), we must renew the value of face-to-face human connections. Very few organizations are uniquely positioned like CKenergy to bring together all members of our local communities.

While rural Americans probably do a better job of staying connected to our neighbors (in part because we need to), it is not something we should take for granted. The simple act of smiling, saying hello and shaking someone's hand truly lifts both parties.

Our country and community face many challenges. Our economy feels like it has

been stagnant for years. Overcoming these challenges will only happen if we come together.

CKenergy's annual meeting is designed to take care of the important business of your co-op and the equally important business of building a real sense of community. All cooperatives serve both an economic and social purpose. While safe, reliable and affordable electric power is crucial to our mission, improving the quality of life for all members is at the core of what we do every day.

If you have not attended the annual meeting in the past or if it has been a few years, we urge you to take the time to be with your fellow co-op members.

We get out of life what we put into it. CKenergy is connected to you by more than just powerlines. We are your neighbors, and we look forward to seeing you at your annual meeting.

This year's annual meeting will be held July 27, 2018, in Weatherford, OK at the Pioneer Cellular Event Center. Registration and the meal begins at 5:00 p.m. and the business meeting begins at 7:00 p.m.

What to expect:

- Complimentary meal
- Registration gifts
- Musical entertainment
- Children's entertainment
- CEO update
- Cash prize drawing
- Kid's prize drawing
- Grand prize drawing

Registration and the meal will begin at 5:00 p.m. with the entertainment following directly after. Members are welcome to stay for the business meeting and the chance to win prizes.

Next Month's Issue:

Look for your annual meeting registration card, the annual report, & more details about this year's event.



PO Box 70 • Binger, Okla. 73009
PO Box 100 • Cordell, Okla. 73632

tele: **(405) 656-2322**
(580) 832-3361

www.ckenergy.coop

OFFICE HOURS:
Monday-Friday,
8:00 am - 5:00 pm.

POWER OUTAGE
HOT LINES
800-868-8243
888-832-3362

BOARD OF TRUSTEES

- Glenn Propps, President
- Jack Sawatzky, Vice President
- Dr. Fred Reuter, Secretary
- John Schaufele
- Mark Slep
- Robert Travis
- Herman Myers
- Walter Hrbacek
- Greg Little
- Gary Brewster
- Don Payne
- Jack McLemore
- John Garland, Attorney
- Clint Pack, CEO

PAYMENT OPTIONS

- Pay online at www.ckenergy.coop.
- Pay by phone by calling **405-656-2322**, available 24 hours a day. Visa, Mastercard, Discover, or American Express.
- Pay in person at any of our offices: Binger, Cordell, Mustang, and Anadarko.
- Pay via automatic draft of your checking or savings account. To sign up, please visit www.ckenergy.coop or call **405-656-2322** or **580-832-3361**.
- **Pay through our CKenergy App available for iPhones or Androids.**



inside this issue | JUNE 2018

- 3** Save Money on Vacation
- 4** Dining in the Dark
- 5** Third Party Payments
- 6** Transformer Safety
- 7** Swap'N Shop



JUNE

Winning CKEC Members

Matthew Kachnavage
Duane Nicholas
Henryetta Byerly

If your name is listed above, please call us at **405-656-2322** to claim a \$25 credit on your electric bill.



Socialize with us!

Stay up-to-date with your co-op and your community by following us on Facebook, Twitter, Instagram, and SnapChat. Get the latest news on co-op events, services, energy saving tips, and more. During a power outage, stay connected with us for updates on the restoration process.

Questions or comments about your newsletter should be directed to Devin Whittington, Communications Specialist, CKenergy, PO Box 70, Binger, OK 73009, email: editor@ckenergy.coop.

Save Money on Vacation

Lower your energy usage while you're away from home.



The arrival of summer can mean long weekends away or even a nextended family vacation. Don't let your house waste energy while you're away. Before you load your suitcases into the car:

- Turn off the heat pump or air conditioner, or set the thermostat to 85-90 degrees if there's something in the house that could suffer heat damage such as house plants.
- Empty the refrigerator and unplug if possible. Remember that as your house grows warmer, a manual-defrost refrigerator may run twice as much as usual, and self-defrosting models can run an additional 20 to 30 percent, trying to keep food cool. Clean it out thoroughly and prop open the door to prevent mildew growth.
- Empty the freezer as well: If you leave it on while turning off your AC, it can eat into your energy savings as it works harder to stay cold.

- Unplug computers, televisions, lamps, and all electronics. These devices will continue to pull electricity, even when they aren't in use. Chances are your desktop computer, laptop, tablet, phone, printer and scanner all "live" near each other. To make it easy, plug them all into a surge-protector power strip. That way, you have to pull only one plug to disconnect them all before you leave home for your trip.
- Leave a light or two on so bad guys won't know you're away, but be sure to connect them to programmable timers that will turn them on and off at the times you specify. Aside from saving energy, the on-and-off lights will make your house appear occupied.

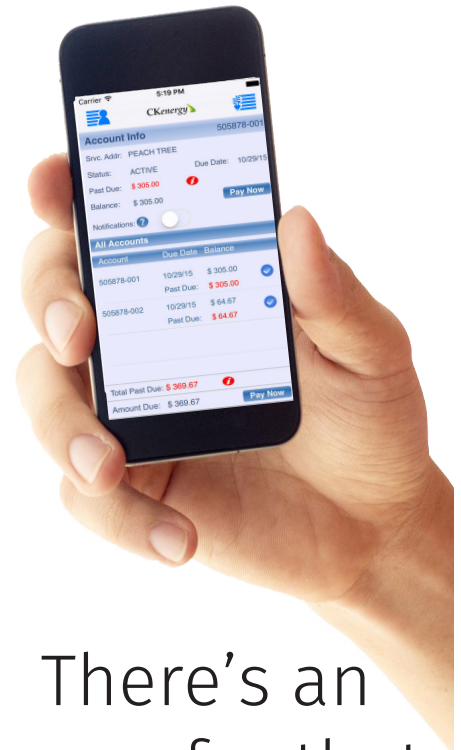
For more energy saving tips, please visit togetherwesave.com, or contact us at 405-656-2322.

Energy Efficiency
Tip of the Month



Avoid setting your thermostat at a colder setting than normal when you turn on your air conditioner. It will not cool your home any faster and could result in excessive cooling and unnecessary expense.

View, Pay,
Create,
Update,
Alert,
Report,
Send &
Receive?



There's an
app for that.

Look for the CKEnergy EC app on Google Play or the App Store.



Dining in the Dark

Food safety tips during a power outage.

Storm-induced power outages can take you by surprise. If you've lost power and have a refrigerator full of food, make sure time and temperatures are on your side.

If your home's power is interrupted for two hours or less, losing perishable foods shouldn't be a concern. When an outage is prolonged, it's time to decide when to save and when to toss food away.

A digital quick-response thermometer can be one of the most useful tools you can wield in your battle to preserve food. The gadget checks the internal temperature of food, ensuring items are cold enough to eat safely.

Use these food safety tips to help you minimize food loss and reduce the risk of foodborne illness:

Refrigerated Food

- Keep refrigerator doors closed as much as possible. An unopened refrigerator keeps food cold for about four hours.
- If food (especially meat, poultry, fish, eggs, and leftovers) has been exposed to temperatures above 40 degrees Fahrenheit

for two or more hours, or has an unusual odor, texture, or color, get rid of it.

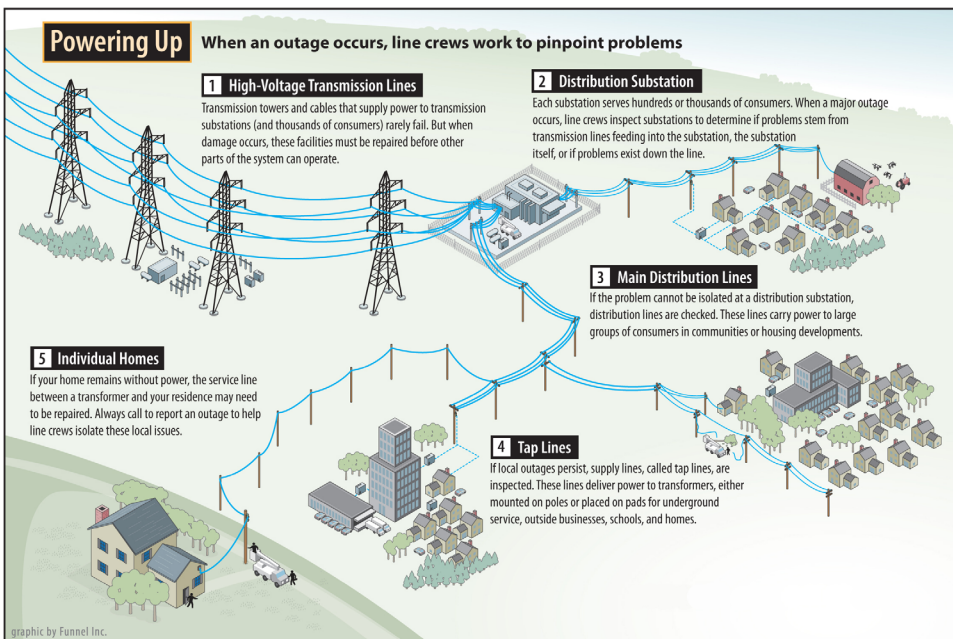
Remember the American Red Cross food safety rule: "When in doubt, throw it out."

- Never taste food to determine its safety or rely on appearance or odor.
- Use perishable foods first, then frozen food.
- To keep perishable food cold, place them in a refrigerator or cooler and cover with ice.

Frozen Food

- A full freezer stays colder longer. Freeze containers of water to help keep food cold in the freezer. If your water supply runs out, melting ice can supply drinking water.
- If you keep the door closed, a full freezer keeps the temperature for approximately 48 hours (24 hours if it is half full).
- If food in the freezer is colder than 40 degrees Fahrenheit, is partially thawed, and has ice crystals on it, you can safely refreeze it.
- Always discard frozen or perishable food items that have come into contact with raw meat juices.

Find more tips at www.FoodSafety.gov.



When electricity goes out, most of us expect power will be restored within a few hours. But when a major storm causes widespread damage, longer outages may result. Co-op line crews work long, hard hours to restore service safely to the greatest number of consumers in the shortest time possible. Here's what's going on if you find yourself in the dark.

BE PREPARED BEFORE A STORM STRIKES

In the event of a power outage, be prepared by keeping the following items in an easy-to-find emergency supply kit.



■ WATER

Three-day supply, one gallon per person per day.



■ TOOLS

Flashlight, extra batteries, manual can opener, battery-powered or hand-crank radio, NOAA Weather Radio with tone alert.



■ FIRST AID KIT AND PRESCRIPTIONS

First aid supplies, hand sanitizer and at least one week's supply of prescriptions and medications for the family.

Learn more at www.ready.gov



Source: American Red Cross, Federal Emergency Management Agency.

Third Party Payment Sites

Know who you are paying.

These days there are countless ways to pay your bills. A new trend that has come about is third party bill pay services. Some sites may appear to be affiliated with our co-op, but they are not.

Some co-op members have felt misled after unknowingly stumbling upon a third party service while searching for CKenergy's payment service.

While some bill pay services are legitimate, members who use these should be cautious to pick reputable companies.

Often, these third party sites charge additional service fees, and do not always make the payment the same day you pay them, which could result in your payment being late and your power being disconnected. Some of these sites/companies include but are not limited to: doxo.com, prismmoney.com, and

chargesmart.com. CKenergy also is not affiliated with any off-site payment kiosks.

Several of these sites use the co-op's name in the header of the webpage and specific company logos, giving it the appearance of an official payment site.

The use of CKenergy Electric Cooperative's logo or even the former Caddo Electric or Kiwash Electric logos is unauthorized and makes it appear that the service is affiliated with CKEC when it is not.

CKenergy's official online payment services are located on our website (www.ckenergy.coop) and through our CKenergy App. There are NO additional fees associated with these programs. Any payments made through them are secure and reflected on your account immediately.

Utility Scams 101

Utility phone scams typically involve callers claiming to represent a utility company attempting to trick people into paying them money by threatening to turn off their service. The scammer usually insists the victim pay immediately with a pre-paid debit card, which provides them easy access to your money.

Hang Up

If there's any doubt about the authenticity of a caller, hang up and call your utility provider directly to verify your billing and payment status.

Report It

Contact your local authorities and utility provider to report theft or attempted theft due to scams.

Beware

Never give out personal information, debit/credit card numbers or wire money as a result of an unexpected or unsolicited call if you cannot validate the caller's authenticity.

Get It In Writing

Customers will receive a 48 hour cut-off notice via U.S. Mail about past due bills before their service is turned off.

Know Your Options

Utilities provide many options for payment and NEVER require the use of a pre-paid debit card.



Secure Ways to Pay

We offer a range of direct payment options with no added fees.

Levelized Billing- CKEC offers a level payment plan for qualified members. Call us to find out how to qualify.

Bank Draft- This bill-paying system eliminates your need to write a check & mail your payment to CKEC. Your payment goes directly from your bank account to CKEC.

Secure Online Bill Pay- Use the Customer Service Portal on our website to make payments, view statements, report outages, & much more. You can also do all of this through our mobile app.

Automated Payment by Phone- Make a payment by dialing 1-800-868-8243 or 1-888-832-3362. You will need your account information.

Drop Box- Deposit a payment anytime at any of our offices at the convenient drop box.

Prepaid Service- Instead of receiving a bill once a month, your electric use and cost is calculated daily. You can check your balance several different ways and receive notices when your balance is low.

For details on these services, call or visit any of our offices:

Binger- 405-656-2322

Cordell- 580-832-3361

Mustang- 405-376-3983

Anadarko- 405-247-3041

Our office hours are 8:00 a.m. to 5:00 p.m., Monday through Friday.

Transformer Safety

Maintain a safe distance around pad-mounted transformers.



Jordan Overbee was driving to work when he saw them. The elementary school-aged youngsters were just waiting for the school bus, but they were sitting on a big green metal box. Inside was vital electrical equipment, distributing electricity to several homes on the street.

“It was a bad place for a school bus stop,” Overbee recalled. “There were five kids gathered there to wait for a bus, sitting, talking and playing for a few minutes because it was between driveways.”

As manager of operations for Wake Electric Membership Corp., Overbee knows a lot about pad-mounted transformers. They make up about half of the transformers used across the Youngsville, North Carolina-based co-op’s system.

“Transformers change voltage from higher levels to voltages people use in their homes for their electronics, appliances and lighting,” said Overbee. “Each of our transformers can be vital to providing electricity to several homes.”

After seeing the kids waiting at that same transformer several days in a row, Overbee pulled over and talked to some of the parents. He explained that high voltage electricity flowed through the transformer

inside the casing, and encouraged them to move a safer distance away.

“The parents hadn’t thought much about it, so once I explained the risks, they were happy to move to another driveway,” Overbee said.

While overhead power lines are mounted on utility poles and substations are protected by security fences, pad-mounted transformers, switch boxes and pedestals are at ground level.

“We have about 5,400 pad mounted transformers on our system,” said Van Crawford, vice president of operations at Peace River Electric Cooperative, headquartered in Wauchula, Florida. “Of that number, 4,800 of them are located in the western district of our service territory.”

In many newer subdivisions and residential developments, overhead lines are no longer an option. Burying power lines also reduces potential system damage from high winds and severe storms. While consumers seldom see technicians working on the transformers unless there are power outages, they are regularly inspected by co-op crews riding through neighborhoods.

“We can see fault indicators from the road,” said Crawford, adding that one of

the biggest concerns is safe access when repairs or component adjustments must be made. “That’s why it’s important that landscaping and other barriers be kept clear of co-op equipment.”

Co-op technicians need at least 10-foot clearance at the opening side of a pad-mounted transformer. Approximately four feet of open space is preferable at the rear and on the sides of the metal housing.

That distance allows for tool use, including hot sticks—typically eight feet in length, used to work with energized equipment. It also ensures that one or two technicians working on a transformer have space to maneuver should they have to back away if problems occur.

Pad-mounted transformers are connected to primary high voltage lines, and secondary lines can extend in several directions to distribute power to homes and businesses. That’s why it’s important to check with CKenergy before planting shrubs or trees, setting fence posts, installing sprinkler systems and digging where it might damage underground lines.

CKenergy recommends that you contact OKIE811 for a site assessment and marking before proceeding with projects that might disrupt utility service.

While pad-mounted transformers in developed, suburban or urban areas are regularly inspected for damage from vehicles, many utilities use marking sticks or pennants to alert tractor, snow plow or heavy equipment operators of their locations.

CKenergy also encourages public works and transportation departments to keep their equipment, supplies and road debris at least 15 feet away from pad-mounted transformers.

Automotive

I buy junk cars & farm equipment.
405-641-3344.

'59 Cessna 172 Airplane. Always hangered.
\$29,000 firm. Shown to qualified pilots only.
Too old to fly anymore. 405-631-1505.

'29 model A Ford- 2 dr coupe, rumble
seat. Insurance & tag up to date. \$20,000.
580-726-2189, leave a message.

'01 Fleetwood, 27 ft., Fifth Wheel. Terry Lite,
queen bed, 1 slide with couch, air and heat.
\$6,500. Plus extras. 405-687-0125.

1989 Itasca Motor Home. 580-515-5015.

2017 Double Cab Toyota Tacoma. 4 wheel
drive, 360 miles, \$31,000. Cash. Selling due
to health. 580-549-6649.

Ford F-350 Camper Special. 1969 model
with 8,700 actual miles, kept inside. Inside
still has new smell. Also, 2015 Polaris Sling
Shot with top. 7,000 miles. Call 580-347-
2570.

Rebuilt Porsche Engine. 1957 356A Normal.
Rebuilt at Weatherford Machine Works in
2016. Call 918-706-4850 to arrange to see.

2009 Electric Car- new batteries. 2,834
miles, Kandi Coco. Asking \$4,800 OBO. 405-
590-4354.

Farm/ Equipment

Marrow's Tractor Tire Repair, Sales, & Service
405-668-0248

Swap 'N Shop is a classified
advertisement service that we
provide to our members at no cost.

- Members are able to submit written ads through the mail, fax, drop off, or by email.
- Ads are **NOT** taken over the phone.
- Ads need to be received by the 10th of each month to appear in the next month's issue.
- Ad space is limited to a 25 word maximum. **ONE** ad per member.
- Contact the editor at 405-656-2322 for information about availability of ad space.
- CKEC reserves the right to reject any ad deemed inappropriate.
- Ads will automatically run for 2 months, additional run time must be requested **before** the 10th of the month.

Swap'N Shop

For Sale or Trade

Note: CKEC does not endorse or guarantee any of the products or services in these ads.

Classic Farmall Tractors: 1950M, 1950H, &
1953 Super H. All in good condition. Call
580-302-2710.

John Deere 4240 Tractor. \$16,000. 3pt, 175
gal. sprayer. \$150. 405-247-7254.

Culti Mulcher. 12 1/2 ft. wide, front & back
rows of wheels, 2 rows in the middle of
spring teeth. Good shape. 580-774-9870.

Livestock/Pets

Genetic Superior Bulls, for more Profit! Low
birth wts, like angus but more muscle, growth,
& better disposition. \$2,200- \$2,800. John Kusel
Limousins. 580-759-6038. Rebates & delivery.

Reg. Limousins- Polled, FB + Blk PB. Bred
heifers & cows. 405-457-6554 or 405-542-7291.

Registered American Angus Bull. 4yr old,
gentle, his calves on site. \$2,300. 405-392-4936.

Beefmaster Bulls for sale. 18 mo. to 24 mo.
Some polled. 405-352-4451 or 405-313-2307.

Business

Slagell Lawn & Tree- offering basic
lawn and tree care, tree removal, stump
grinding. 580-302-1455.

Heavy Equipment Hauling. 80k lbs or less.
Driveway gravel, debris haul off. All your
trucking needs! C and K Trucking. 405-395-
7758.

Hooked on Antiques, 209 W Main, Binger.
Wed. 9:30 a.m- 5 p.m. Thurs. 9 a.m.- 4:30
p.m. Call 405-202-6563 for more info and
additional open days.

Tree trimming, hedges, concrete, brick
work, lawn care, handyman. 580-660-0402.

BackWoods Welding & Construction-
Farm & ranch welding - general welding-
specialize in pipe fencing- steel buildings-
metal roofs- pole barns. State certified &
insured. References available. 405-320-
8379 or find us on Facebook.

Hay/ Wood

2017 sprayed & fertilized Blue Stem,
Bermuda, & Native Grass. Lg round bales.
580-550-0334.

Seasoned split Oak firewood- 20" cut. In
Anadarko, \$85.00 per rick. Delivery will be
extra. 405-638-1158.

NOTICE

**There wil be NO Swap N Shop in the July
issue of The Buzz. It will return for the
August Issue.**

Swap 'N Shop Ads are continued on page 8

**You may submit classified ads, businesses, or services to Swap 'N Shop, P.O.
Box 70, Binger, OK 73009, ads@ckenergy.coop, or fax to 405-656-2912. One
ad per member unless there is additional space available.**

Circle category:

Autos Farm/Equip Furn/Appl Hay/Wood Livestock/Pets Misc
Real Estate Wanted-Notices Business

Name: _____

Address: _____

Phone # _____

CKEC Acct # _____

Miscellaneous

5 3/8 pitcher, square handled condiment/ relish dish, 4 1/4' stemmed jam/jelly w/ lid, 2 candleholders, 3 3/4' round condiment w/ lid, stemmed sherbet & divided pickle tray. \$55. 405-256-0121. bballens2@gmail.com.

Real Estate

528 S. Spencer, Hinton. Completely remodeled. Must see. 3 bd, 2 ba, utility room. Detached garage. 1,450 sq. ft. MOL. 405-306-1538.

2,128 sq. ft. home. 3 bd, 2 1/2 ba. Lg. living room. 5 walk-in closets. Metal roof, all electric. Well kept-40x50 steel bldg. on 5 acres. Gracemont. Serious lookers only. 580-515-4126.

3 bd, 2 ba brick home. XL lot west edge of Cordell. New Four Seasons sunroom/patio. basement, storage shed, fence, updated throughout. \$199,900. 940-395-1370.

Gracemont: Quiet, small, rural acreage w/ 3b, 1 1/2 ba brick home. Attached garage, storm shelter, shop building, 2 car carport, old barn, water well, close to town, paved road. Reduced to \$79,900. 405-402-0895.

Auto- transmission shop. All equipment w/ it. 60x60x14 building. 6 lots on corner. Built in 05. 580-331-7180.

1 acre commercial zoned. Between Tuttle & Tricity on highway 37. 4 3/4 mi east of Tuttle. 405-794-4612.

3 bd, 1 ba. Carport, storage building, fenced in yard, new kitchen, remodeled bathroom with wood, tile, & carpet floors and new windows. \$83,000, just have to see. 405-952-4171.

Two lots. Well, electricity, 2 metal buildings, 21 ft. Tahoe travel trailer. Used very little but needs repairs. Make offer. Swan Lake area. 405-681-6991.

Cedar Lake Cabin (lot 821). Dock space, 2 bed, 1 bath. 1048 sq. ft. \$65,500. 405-295-2401.

Two acres south of Carnegie. 3 bed, 2 bath trailer. Living room, den, 2 car garage, shop, storage shed, garden shop. 2 cellars. \$75,000. 580-654-2202.

2 adjoining cemetery plots by pond with fountain. Resthaven OKC. \$7,000 OBO. 405-517-2624.

36 acres- surface land, scenic Wichita Mts. 4 miles West of Meers, OK. Bids begin at \$4,200 per acre. Amenities available. Email: Wayne Orrell@gmail.com

120 acres available for oil lease in Washita County- section 6-8-14. 405-794-4612.

Ft. Cobb Lake- 2 story, 5bd, 2lr, 2ba, garage,

fireplace, vaulted ceilings, open concept, newly remodeled, furnished, backs up to lake. 405-222-0636.

Rainbow Lake between Minco & Binger. Best kept secret. Secluded in back part of lake. Have your own shooting range & hunting. 40ft trailer, new deck remodded. \$10,000 or trade. 405-371-2317.

Beautiful home in Eakly. 3 bd, 1 ba, 2 living rooms. New carpet & tile throughout plus a new stove. Move in ready. Large back yard & a 2 car carport. \$43,900. 405-627-4176.

Grandad's Hideout (Trailer Park) in Butler. 16 working hook-ups with 30 to 50 amp electric. 580-214-1731 or 580-664-3921.

16x80 MH Crow's Roost addition. 3bd, 2 bath, 60x120 lot, #35,000 OBO. 405-664-2662.

20x50 MH 2 bath, 3d, CH&A, \$15,000 firm. Crow's Roost addition. 405-601-0382.

3 bed, 1 bath, home for sale in Eakly. Attached garage & extra lot. Call Eagle Realty at 580-772-8300 to make an offer!

20 acres of grassland. 5 miles southwest of Woodward. \$60,000 OBO. 580-473-2224.

2 story house on one acre, 2 1/2 car detached garage, 3.5 miles west of Bessie. \$35,000. 903-783-1146.

Fort Cobb Lake Lots- Crow's Roost area. 3 lots recently cleared & levelled off. 192' wide x 120' deep, 2 water wells, & septic. 405-694-0625.

Time to get out of the city? This beautiful 2600 sq. ft. home with basement on 40 acres will be a great investment. This estate comes with pipe fencing; pnd and private drive perfect for cattle or horses. Located south of Anadarko. Email williamska72@yahoo.com for more info.

FOR RENT: Quiet, country living north of Weatherford. 2 bd/ 2 ba apartments with all appliances including washer & dryer. Horse facilities available. \$900/mo, \$50/horse. FMI call 580-772-4855.

70 acres, surface only, 1 mile west of Lookeba on Sickles Rd. 405-495-1658.

For Rent- At Foss Lake. Large house and/or party barn. All amenities. 580-323-1975.

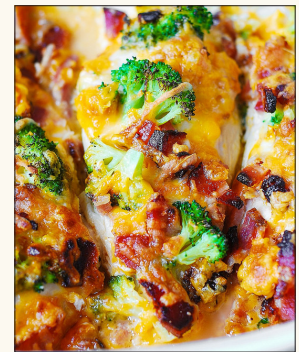
Events

Clinton Country Jamboree: Showtime 7:00 p.m. Country & Western 1st and 3rd Saturday every month. All Gospel 5th Saturday. Admission \$9.00. Concession available. Family Entertainment. I-40 ext 71, Clinton, OK. 580-331-8377.

Broccoli Bacon Cheddar Chicken

Ingredients:

1 tablespoon olive oil
4 chicken breasts (use 4 thin chicken breasts, or use 2 large chicken breasts, sliced in half, horizontally)
salt and pepper
2 cups broccoli florets, blanched, chopped
6 strips bacon, cooked, chopped
1/3 cup Mozzarella cheese, shredded
1 cup Cheddar cheese, shredded



Directions:

Preheat the oven to 400 F. Grease the bottom of the casserole dish with olive oil. I used the the oval casserole dish measured 13 inches x 9 inches x 4 inches deep. Add chicken breasts to the casserole dish. Note about chicken: use 4 thin chicken breasts, or use 2 large thick chicken breasts, sliced in half horizontally each to make 4 thin chicken breasts. Sprinkle chicken breasts with salt and pepper. Top with chopped and blanched broccoli florets, chopped cooked bacon, shredded Mozzarella cheese, and shredded Cheddar cheese. Bake, uncovered, for about 20-30 minutes, until the chicken is cooked through. The cooking time will depend on the thickness of your chicken breasts.