

## Four Ways Santa Saves Energy in His Workshop

The holiday season is finally upon us, and Santa and his elves have been especially busy as they gear up for their biggest night of the year.

It's no secret that Santa is known for running an efficient workshop-- how else could he make all those toys in time for Christmas Eve? Rumor has it that one way Santa ensures an efficient workspace is through energy-saving measures.

Here are four ways Santa saves energy in his workshop.

1. Santa leaves his decorations up year-round, so by using LED holiday light strands, he's able to save on his monthly energy bills. LED holiday strands can last up to 40 seasons, which make them a great option for any festive home.
2. Santa requires several power tools to make a year's worth of new toys. That's why he insists on using cordless power tools with the ENERGY STAR® rating. According to energystar.gov, if all power tools in the U.S. used ENERGY STAR®-rated battery chargers, 2 billion kWh hours of electricity could be saved-- that's equivalent to reducing greenhouse gas emissions by 1.7 million tons!
3. Mrs. Claus loves to keep warm by the fire in the evenings, and Santa knows one of the best tricks to ensure fireplace efficiency. While a fireplace can keep a small area of your home cozy and warm, it can also pull heated air from the room through the chimney. That's why Santa



always closes the fireplace flue when a fire isn't burning.

4. Santa also saves energy by using power strips. Power strips are ideal for workshops, craft nooks, game rooms and other spaces in your home. With one simple switch, you can conveniently control several devices and electronics that are plugged into the power strip.

This holiday season, let's take a page from Santa's book and remember to save

energy when possible. With these four tips, you'll be well on your way to savings (and hopefully, Santa's "nice" list!).

### Energy Efficiency Tip of the Month

Energy bills can increase during winter for a variety of reasons, like houseguests, more time spent at home, and shorter days and longer nights. Small actions, like turning down your thermostat, replacing old bulbs with LEDs and washing clothes in cold water can help you save.





PO Box 70 • Binger, Okla. 73009  
PO Box 100 • Cordell, Okla. 73632

tele: **(405) 656-2322**  
**(580) 832-3361**

[www.ckenergy.coop](http://www.ckenergy.coop)

OFFICE HOURS:  
Monday-Friday,  
8:00 am - 5:00 pm.

POWER OUTAGE  
HOT LINES  
**800-868-8243**

**888-832-3362**

#### BOARD OF TRUSTEES

Gary Brewster, President

Jack Sawatzky, Vice President

Dr. Fred Reuter, Secretary

John Schaufele

Mark Slemp

Robert Travis

Tony Setzer

Steve Sweeney

Walter Hrbacek

Greg Little

Glenn Propps

Don Payne

John Garland, Attorney

Clint Pack, CEO

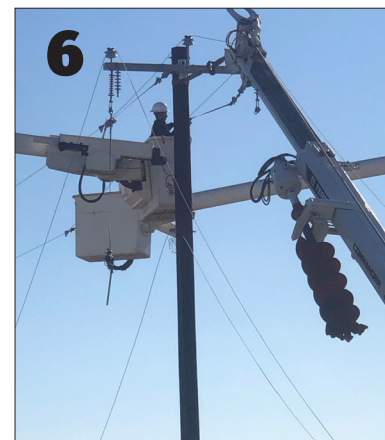
#### PAYMENT OPTIONS

- Pay online at [www.ckenergy.coop](http://www.ckenergy.coop)
- Pay by phone by calling **405-656-2322**, available 24 hours a day. Visa, Mastercard, Discover, or American Express.
- Pay in person at any of our offices: Binger, Cordell, Mustang, and Anadarko.
- Pay via automatic draft of your checking or savings account. To sign up, please visit [www.ckenergy.coop](http://www.ckenergy.coop) or call **405-656-2322** or **580-832-3361**.
- **Pay through our CKenergy App available for iPhones or Androids.**



## inside this issue | December 2020

- 3** Fire Departments
- 4** Road to Recovery
- 5** Ice Storm Pics
- 6** Power Restoration
- 7** Swap’N Shop



#### DECEMBER

### Winning CKEC Members

Dottie Brummell  
Lonnie Henderson  
Daryle Snelgrooves

If your name is listed above, please call us at **405-656-2322** to claim a \$25 credit on your electric bill.



### Socialize with us!

Stay up-to-date with your co-op and your community by following us on Facebook, Twitter, Instagram, and SnapChat. Get the latest news on co-op events, services, energy saving tips, and more. During a power outage, stay connected with us for updates on the restoration process.

Questions or comments about your newsletter should be directed to Lisa Willard, Director of Communications, CKenergy, PO Box 100, Cordell, OK 73632, email: [editor@ckenergy.coop](mailto:editor@ckenergy.coop).



# CKEC Honors Local Fire Departments



Hinton Fire Department



Anadarko Fire Department

Ckenergy is thankful for the fire departments located within our service territory. We appreciate all you do to strengthen our communities and protect those in need. Firefighters respond to hundreds of calls per year within our communities. We value their commitment to serve our communities and save lives, homes, and businesses.

CKEC honored the 61 fire departments with a \$2,000 donation check. We appreciate the hardworking men and women that protect our communities.

Pictured are just a few of the fire departments that received the donation. Please visit CKEC's Facebook page to see all of the pictures emailed to us.



Cloud Chief Fire Department



Roosevelt Fire Department



Bessie Fire Department





CKenergy power lines buckle under the heavy weight of ice

## The Road To Recovery

### October ice storm leads to devastating damage

**O**n Sunday, October 25, a significant winter storm system began to develop in Oklahoma. The system, which brought an ice storm warning for most of central and parts of western Oklahoma, is considered historic due to its early fall timeline.

At its peak, Oklahoma's electric cooperatives experienced 76,300 outages. Collectively, utilities in the state of

Oklahoma, including investor-owned and a few municipalities, reported more than 353,000 consumers without power.

The powerful ice storm knocked out power to over 22,000 CKenergy members and propelled CKEC crews and members into disaster recovery mode. The October blast carried a significant and painful punch.

On Monday, October 26, Governor Kevin Stitt issued an Emergency Declaration for 47 Oklahoma counties due to severe winter weather, freezing rain and ice accumulations.

While the brunt of the storm fell on Caddo and Canadian County, nearly every portion of CKenergy's cooperative system was affected. The most recent damage figures estimate a loss of 3,000 poles, 5,000 cross arms and a total of 10,000 structures.

Some members lost service for more than 12 days with intermittent outages reported as ice melted causing lines to bounce back and snap.

By late evening on November 10, CKenergy crews aided by 45 additional crews had restored power to all residential members of CKenergy.

Co-op officials say it is too soon to estimate the financial impact of the storm, but it will be high.

As recovery and rebuilding efforts continue, CKenergy reminds members to stay away from downed power lines and report any unsafe situations. Members are also advised to be aware of co-op crews and vehicles as they work along the roads and highways. Your continued patience and cooperation is greatly appreciated.



## CKEC will hand out Christmas Goodies December 21-24.

Visit the drive-thru at our Binger, Anadarko or Mustang locations during the week of December 21 and receive a Christmas goody!

The Cordell lobby is open so please wear your mask inside to receive your Christmas goody. We appreciate our members and look forward to seeing you the week of December 21-24. Merry Christmas from all of us at CKenergy!

# October Ice Storm Restoration Pictures



## Statement of Non-Discrimination

In accordance with Federal civil rights law and U.S. Department of Agriculture (USDA) civil rights regulations and policies, the USDA, its Agencies, offices and employees, and institutions participating in or administering USDA programs are prohibited from discriminating based on race, color, national origin, religion, sex, gender identity (including gender expression), sexual orientation, disability, age, marital status, family/parental status, income derived from a public assistance program, political beliefs, or reprisal or retaliation for prior civil rights activity, in any program or activity conducted or funded by USDA (not all bases apply to all programs). Remedies and complaint filing deadlines vary by program or incident.

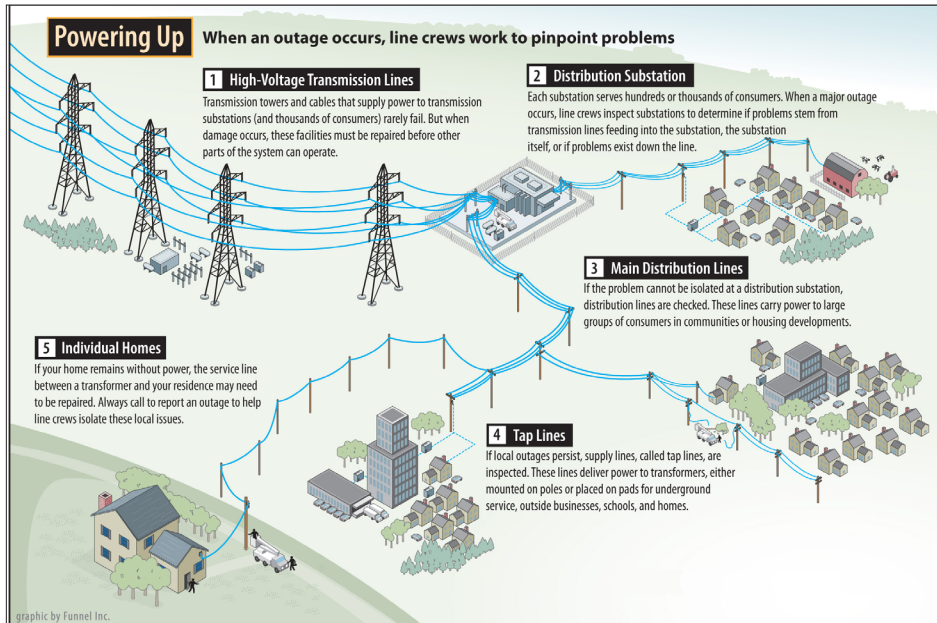
Persons with disabilities who require alternative means of communication for program information (e.g., Braille, large print, audiotape, American Sign Language, etc.) should contact the responsible Agency or USDA's TARGET Center at (202)720-2600 (voice and TTY) or contact USDA through the Federal Relay Service at (800)877-8339. Additionally, program information may be made available in languages other than English.

To file a program discrimination complaint, complete the USDA Program Discrimination Complaint Form, AD-3027, found online at [How to File a Program Discrimination Complaint](#) and at any USDA office or write a letter addressed to USDA and provide in the letter all of the information requested in the form. To request a copy of the complaint form, call (866)632-9992. Submit your completed form or letter to USDA by: (1) mail: U.S. Department of Agriculture, Office of the Assistant Secretary for Civil Rights, 1400 Independence Avenue, SW, Washington, D.C. 20250-9410; (2) fax: (202)690-7442; or (3) email: [program.intake@usda.gov](mailto:program.intake@usda.gov).

*CKenergy is an equal opportunity provider and employer.*



# The Steps to Restoring Power



Ice storms. Tornadoes and blizzards. Electric cooperative members have seen them all in the last few years. And with such severe weather comes power outages. Restoring power after a major outage is a big job that involves much more than simply throwing a switch or removing a tree from a line.

The main goal is to restore power safely to the greatest number of members in the shortest time possible.

The major cause of outages is damage caused by fallen trees. That's why your electric cooperative has an ongoing right-of-way maintenance program.

Report your outage to the cooperative office. Employees or response services use every available phone line to receive your outage reports. Remember that a major outage can affect thousands of other members.

The steps below explain how power typically is restored after a major disaster, such as an ice storm or tornado. While power restoration priorities may differ from co-op to co-op, electric system

repairs generally follow a plan similar to the one here.

During a major outage, other co-ops are prepared to help. They send line crews to assist with restoring power.

Individual households may receive special attention if loss of electricity affects life support systems or poses another immediate danger. If you or a family member depends on life support, call your cooperative before an emergency arises. When a significant outage occurs, your co-op will fix your problem as quickly as possible, or will call to let you know to seek shelter elsewhere.

## STEP 1

Transmission towers and lines supply power to one or more transmission substations. These lines seldom fail, but they can be damaged by a hurricane or tornado. Tens of thousands of people could be served by one high-voltage transmission line, so if there is damage here it gets attention first.

## STEP 2

A co-op may have several local distribution substations, each serving thousands of consumers. When a major outage occurs, the local distribution substations are checked first. A problem here could be caused by failure in the transmission system supplying the substation. If the problem can be corrected at the substation level, power may be restored to a large number of people.

## STEP 3

Main distribution supply lines are checked next if the problem cannot be isolated at the substation. These supply lines carry electricity away from the substation to a group of consumers, such as a town or housing development. When power is restored at this stage, all consumers served by this supply line could see the lights come on, as long as there is no problem farther down the line.

## STEP 4

The final supply lines, called tap lines, carry power to the utility poles or underground transformers outside houses or other buildings. Line crews fix the remaining outages based on restoring service to the greatest number of members.

## STEP 5

Sometimes, damage will occur on the service line between your house and the transformer on the nearby pole. This can explain why you have no power when your neighbor does. Your co-op needs to know you have an outage here, so a service crew can repair it.

Members themselves (not the co-op) are responsible for damage to the service installation on the building. Your coop can't fix this. Call a licensed electrician.

### Automotive

1965 Chevy two door post 350. Four speed transmission. New paint, wheels, and tires. \$28,000 cash. 405-818-9011.

2009 Ford Explorer Eddie Bauer. 89,900 miles. Moonroof, leather seats, rear air. \$8,500. 405-659-9737.

55 Chevy. Complete. Not running. 4-door. \$5400 cash. 405-818-9011.

2005 Hyundai. Transmission rebuilt in 2016. Threw out bearing and quit in 2014. Just sitting since. \$98,000 miles. Best offer. 405-966-2041

Four new tires with hubs and caps with spare. Size 14. \$150. 405-394-8867.

### Farm/ Equipment

24' Allis field cultivator, good cond. \$1000. 495 NS swather, 12' pull type, good cond. \$1500. 8350 JD wheat drill, hyd. lift, 8-16 \$1100. 580-574-0254.

1954 Ferguson, new rear tires. Needs Carburator parts installed. New carburator parts. \$1100 580-530-0593.

6' Gannon bo glade with hydraulic rippers. 405-834-4326.

# Swap 'N Shop

## For Sale or Trade

*Note: CKEC does not endorse or guarantee any of the products or services in these ads.*

### Livestock/Pets

Gentle, genetic superior bulls. Easy calving, more growth and muscle. Make money with Kusel Limousin bulls. Call John, 580-759-6038.

Red angus bulls, service age, gentle, several A.I. sired. Call or text 580-450-1735.

Four year old red angus bull. Leave message. 580-919-5490.

### Business

6:11 Welding & construction. Pipe fencing, metal buildings, farm equipment, & all your welding needs. No job too big or small. Bill Smith, 405-320-8379.

Mooters water well serivces, water well drilling, pump installs, agriculture, residential and irrigation. 405-668-0213 or 405-668-2336.

Mooters hay and cattle hauling. 405-668-0213.

Dirt work, land clearing, stumps, ponds. Fletchers backhoe. 405-519-2718.

Parking lot maintenance, crack ,asphalt sealing overlay, potholes, striping and signage. 405-245-6759.

Cooks Septic Service. Septic tank pumping and insecptions. 580-550-0545.

Mainstreet 420 Shop. Medical cannabis. 405-687-5004.

Mainstreet 420 Shop. 417 W. Main, Binger. Mon.-Sat. 11 a.m. - 7 p.m. and Sun. 1 p.m.-7 p.m. 405-687-5004.

### Miscellaneous

6x5 wheat hay bales. Baled without being rained on in the wind row. \$50/bale. 405-797-3203 or 405-545-2121.

Polaris 570 Sportsman Accessoiies. Gun boot/bracket \$75. Towable cover \$80. Cargo box \$125. New tires. \$200. 405-501-1670.

Heavy duty fire pits. Built out of propane tank ends. Free standing. 580-819-0695.

**Swap 'N Shop Ads are continued on page 8**

**You may submit classified ads, businesses, or services to Swap 'N Shop, P.O. Box 100, Cordell, OK 73632, ads@ckenergy.coop, or fax to 580-832-5174. One ad per member unless there is additional space available.**

Swap 'N Shop is a classified advertisement service that we provide to our members at no cost.

- Members are able to submit written ads through the mail, fax, drop off, or by email.
- Ads are **NOT** taken over the phone.
- Ads need to be received by the 5th of each month to appear in the next month's issue.
- Ad space is limited to a 25 word maximum. **ONE** ad per member.
- Contact the editor at 580-832-3361 for information about availability of ad space.
- CKEC reserves the right to reject any ad deemed inappropriate.
- Ads will automatically run for 2 months, additional run time must be requested **before** the 5th of the month.

#### Circle category:

|       |             |                |          |                |      |
|-------|-------------|----------------|----------|----------------|------|
| Autos | Farm/Equip  | Furn/Appl      | Hay/Wood | Livestock/Pets | Misc |
|       | Real Estate | Wanted-Notices | Business |                |      |

Name: \_\_\_\_\_

Address: \_\_\_\_\_

Phone # \_\_\_\_\_

CKEC Acct # \_\_\_\_\_

---



---



---



---



---

Reclining living room set from Bob Mills. One year old. Excellent condition. No animals or kids on them. Blue gray color. Will sell couch and loveseat separate. \$1500. 405-256-0270

Inogen one porable oxygen conentrator with two double batteries, carry bag, all manual and plugs. less than one year old. \$1595. 405-659-9737.

Jeans and pants hemming and minor alterations. Tuxes, accessory sales and rentals. Settle Studio. 405-247-5142.

### Real Estate

Country living, close to town-3600sq' metal barn home, log cabin style w/ approx. 2100sq' wrap around porch on 3 sides. 3bd/2ba, office 23' ceilings in living room. Sits on 40 acres. Comes with 30x60 metal barn w/ lean to, insulated with living quarters, in ground cellar. 20 KW generator. Located 1/2 mile S of Burns Flat golf course. 580-799-7369.

5 acre tract of land,, timber wild life. Water available. Minco school district. Located on 2750 County Street in Caddo county line west of Minco. Show by appt. only. Financing available. 405-574-2980.

For Rent: 2bd/2ba north side of lake. \$500/month, \$00 deposit. No pets. 580-302-3051.

Country Living: 3bd south of Binger. 580-302-3051. No pets. \$600/month, \$500 deposit.

FOR RENT: Foss Lake, house weekends or weekly. 5bd/2 1/2ba for party barn, great for reunions, both cool, fully equipped. 580-214-0178. www.bigretreat.com.

43 acres mol, Minco. Goregeous 4,025 sq. ft. home, Geothermal HVAC, inground pool, shelter, 50x50 barn, gated entrance. Call Diane Denison, 405-919-7457.

For Rent: Vacation Cabins at Foss Lake. Quiet neighborhood, no smoking, no pets. 580-515-6452.

Vacation Rental Cabin. Fort Cobb Lake, right on the edge of the water. Room to park boat and trailer. 580-243-8697.

House for Sale: 904 N Broadway Avenue, Hydro, Oklahoma. 1650 sq. ft. 3bd/2ba, all electric. Wood burning fireplace, 10

ft. ceiling in living room, large walk-in closets, bay windows in dining room look out onto a a beautiful shaded, fenced in back yard. Cellar on patio, large storage building. Corner lot with mature trees and a garden spot. Asking \$180,000. 580-816-0293.

Want to run your own business? Roger Mills County's only newspaper is for sale! Thriving business with proven success. Be your own boss.

For Rent: 2 lg bd, lg kitchen, living room, den, 1/2ba, washroom, alarm & internet, carport. No Pets. \$600/mo. 580-302-3051.

For Rent: small 2bd/1ba, \$400/mo, \$300 dep. South Side Ft. Cobb Lake. 580-302-3051

Vacation cabin rental. Great for hunting, fishing at Ft. Cobb lake. Room for trailer and boat. Next to water. 580-243-8697.

128x128 lake lots in Crows Roost. Privacy on a dead end road. Three covered bays and one bay with overhead door. Large concrete slab and four fruit trees. 405-694-0625.

### Events

Clinton Country Jamboree: Showtime 7:00 p.m. 1st Saturday every month. Admission \$10.00. Concession available. Family Entertainment. I-40 ext 71, Clinton, OK. 580-331-8377.

## Zwieback Rolls

### Ingredients:

1 package (1/4 ounce) active dry yeast  
1 tsp sugar  
1/2 cup warm water  
6 to 6 1/2 cups all-purpose flour, divided  
1 Tbs. salt  
3/4 cup butter, melted and cooled  
2 cups scalded milk, cooled



### Directions:

In a small bowl, disolve yeast and sugar in water; set aside. In a large bowl, combine 3 cups flour, salt, shoring, milk and yeast mixture. Beat well. Add enough of the remaining flour to form a soft dough.

Turn out onto a lightly floured surface; knead until smooth and elastic about 6-8 minutes. Dough will be soft. Place dogh in a lightly greased bowl; cover and allow to rise in a warm place until doubled, about 1 hour.

Punch dough down and divide into four pieces. Divide three of the pieces into eight pieces each; shape into smooth balls and place on greased baking sheets. Divide reaming dough into 24 balls. Press 1 small ball atop each larger ball. Cover and let rise until doubled, about 45 minutes. Preheat over to 375 degrees. Bake until golden, 28-32 minutes. Remove from pans to wire racks. Serve warm.